

Anti-L-dopachrome tautomerase DCT Antibody

Catalog Number: A01830-2

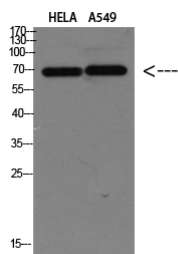
Overview

Product Name	Anti-L-dopachrome tautomerase DCT Antibody
Reactive Species	Human, Mouse
Description	Boster Bio Anti-L-dopachrome tautomerase DCT Antibody catalog # A01830-2. Tested in ELISA, WB applications. This antibody reacts with Human, Mouse, Rat.
Application	ELISA, IF, IHC, WB
Clonality	Polyclonal
Formulation	Liquid in PBS containing 50% glycerol, 0.5% stabilizing protein and 0.02% sodium azide. *This antibody is supplied in a stabilized formulation. Compatibility with conjugation reactions depends on the chemistry of the conjugation method used. For conjugation methods that are not compatible with the stabilizing components present in this formulation, a carrier-free antibody format is required.
Storage Instructions	Store at -20°C for one year. For short term storage and frequent use, store at 4°C for up to one month. Avoid repeated freeze-thaw cycles.
Host	Rabbit
Uniprot ID	P40126

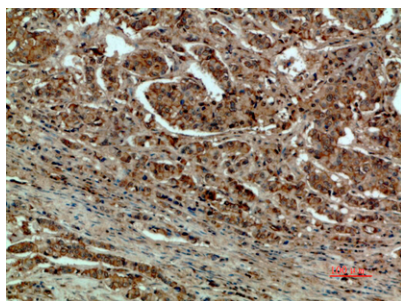
Technical Details

Immunogen	Synthetic peptide from human protein at AA range: 232-304
Cross Reactivity	No cross reactivity with other proteins.
Isotype	IgG
Form	Liquid
Concentration	1 mg/ml
Purification	The antibody was affinity-purified from rabbit antiserum by affinity-chromatography using epitope-specific immunogen.
Suggested Dilutions	WB 1:500-2000 IHC 1:500-200 ELISA 1:10000-20000 IF 1:50-200

Anti-L-dopachrome tautomerase DCT Antibody (A01830-2) Images



Western blotting validation for Anti-L-dopachrome tautomerase DCT Antibody A01830-2 Western blot analysis of HELA A549 Cell Lysate



Immunohistochemistry validation of DCT using Anti-L-dopachrome tautomerase DCT Antibody (A01830-2). Immunohistochemical analysis of paraffin-embedded human-breast-cancer

Submit a product review to Biocompare.com

Submit a review of this product to Biocompare.com to receive a \$20 Amazon.com giftcard! Your reviews help your fellow scientists make the right decisions. Thank you for your contribution.



Anti-L-dopachrome tautomerase DCT Antibody

For Research Use Only. Not for use in diagnostic procedures.