

Anti-APOL1 Antibody

Catalog Number: A01841-2

About APOL1

APOL1 is a secreted high density lipoprotein which binds to apolipoprotein A-I. Apolipoprotein A-I is a relatively abundant plasma protein and is the major apoprotein of HDL. It is involved in the formation of most cholesteryl esters in plasma and also promotes efflux of cholesterol from cells. This apolipoprotein L family member may play a role in lipid exchange and transport throughout the body, as well as in reverse cholesterol transport from peripheral cells to the liver.

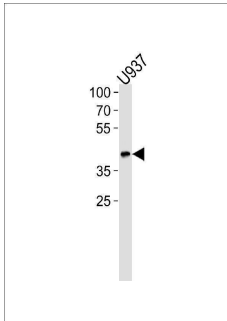
Overview

Product Name	Anti-APOL1 Antibody
Reactive Species	Human
Description	Boster Bio Anti-APOL1 Antibody (Catalog # A01841-2). Tested in WB, Flow Cytometry, IHC-P application(s). This antibody reacts with Human.
Application	Flow Cytometry, IHC-P, WB
Clonality	Polyclonal
Formulation	Purified polyclonal antibody supplied in PBS with 0.09% (W/V) sodium azide.
Storage Instructions	Maintain refrigerated at 2-8°C for up to 2 weeks. For long-term storage, store at -20°C in small aliquots to prevent freeze-thaw cycles.
Host	Rabbit
Uniprot ID	O14791

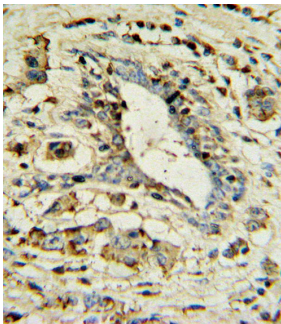
Technical Details

Immunogen	This APOL1 antibody is generated from rabbits immunized with a KLH conjugated synthetic peptide between 137-171 amino acids from human APOL1.
Predicted Reactive Species	Mouse, Rat
Isotype	Rabbit IgG
Purification	This antibody is prepared by Saturated Ammonium Sulfate (SAS) precipitation followed by dialysis against PBS.
Suggested Dilutions	WB: 1:1000 IHC-P: 1:10-1:50 FC: 1:10-1:50

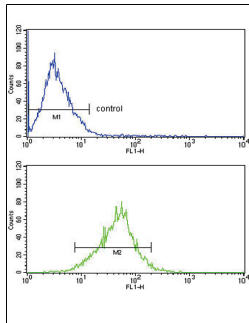
Anti-APOL1 Antibody (A01841-2) Images



APOL1-BH3 Domain Antibody western blot analysis in U937 cell line lysates (35ug/lane). This demonstrates the APOL1-BH3 Domain antibody detected the APOL1-BH3 Domain protein (arrow).



APOL1 Antibody IHC analysis in formalin fixed and paraffin embedded human breast carcinoma followed by peroxidase conjugation of the secondary antibody and DAB staining. This data demonstrates the use of the APOL1 Antibody for immunohistochemistry. Clinical relevance has not been evaluated.



APOL1 Antibody FC analysis of MCF-7 cells (bottom histogram) compared to a negative control cell (top histogram). FITC-conjugated goat-anti-rabbit secondary antibodies were used for the analysis.

Submit a product review to [Biocompare.com](https://www.biocompare.com)

Submit a review of this product to [Biocompare.com](https://www.biocompare.com) to receive a \$20 Amazon.com giftcard! Your reviews help your fellow scientists make the right decisions. Thank you for your contribution.



Anti-APOL1 Antibody

For Research Use Only. Not for use in diagnostic procedures.