

Anti-Bone morphogenetic protein 15 BMP15 Antibody

Catalog Number: A01842-2

About BMP15

BMP15, or GDF9B is a member of the bone morphogenetic protein family which is part of the transforming growth factor-beta superfamily that are involved in embryonic development and adult tissue homeostasis. BMP15 is expressed exclusively in the oocyte. It is an oocyte-specific growth/differentiation factor that may be involved in oocyte maturation and follicular development. Defects in BMP15 are the cause of ovarian dysgenesis type 2. BMP15 could be used as an oogenesis marker to track human amniotic fluid stem cells differentiation into the oocyte-like cells.

Overview

Product Name	Anti-Bone morphogenetic protein 15 BMP15 Antibody
Reactive Species	Human, Mouse
Description	Boster Bio Anti-Bone morphogenetic protein 15 BMP15 Antibody (Catalog # A01842-2). Tested in ELISA, WB, ICC, IF applications. This antibody reacts with Human, Mouse.
Application	ELISA, IF, ICC, WB
Clonality	Polyclonal
Formulation	BMP15 Antibody is supplied in PBS containing 0.02% sodium azide.
Storage Instructions	BMP15 antibody can be stored at 4°C for three months and -20°C, stable for up to one year. Avoid repeated freeze-thaw cycles. Antibodies should not be exposed to prolonged high temperatures.
Host	Rabbit
Uniprot ID	O95972

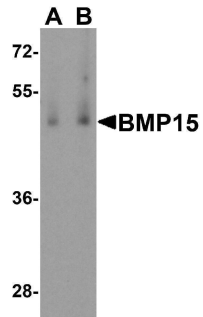
Technical Details

Immunogen	BMP15 antibody was raised against a 16 amino acid synthetic peptide near the amino terminus of human BMP15. The immunogen is located within amino acids 30 - 80 of BMP15.
Predicted Reactive Species	Bovine, Sheep
Cross Reactivity	It is closely related to GDF9.
Isotype	IgG
Form	Liquid
Concentration	1 mg/mL
Purification	BMP15 Antibody is affinity chromatography purified via peptide column.
Suggested Dilutions	BMP15 antibody can be used for detection of BMP15 by Western blot at 1 - 2 ug/mL. Antibody can

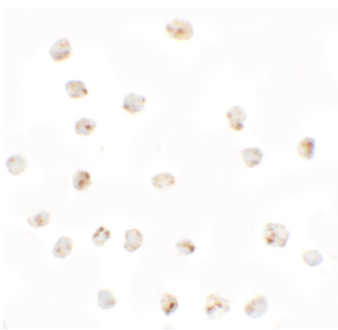
also be used for immunocytochemistry starting at 2.5 ug/mL. For immunofluorescence start at 2.5 ug/mL.

Antibody validated: Western Blot in human samples; Immunocytochemistry in mouse samples and Immunofluorescence in mouse samples. All other applications and species not yet tested. Optimal dilutions for each application should be determined by the researcher.

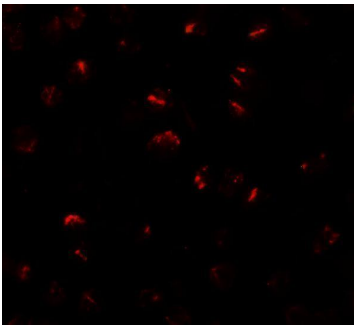
Anti-Bone morphogenetic protein 15 BMP15 Antibody (A01842-2) Images



Western blot analysis of BMP15 in human testis tissue lysate with BMP15 antibody at (A) 1 and (B) 2 ug/mL.



Immunocytochemistry of BMP15 in 3T3 cells with BMP15 antibody at 2.5 ug/mL.



Immunofluorescence of BMP15 in 3T3 cells with BMP15 antibody at 20 ug/mL.

Submit a product review to Biocompare.com

Submit a review of this product to Biocompare.com to receive a \$20 Amazon.com giftcard! Your reviews help your fellow scientists make the right decisions. Thank you for your contribution.



Anti-Bone morphogenetic protein 15 BMP15 Antibody

For Research Use Only. Not for use in diagnostic procedures.