

Anti-FGF-16 Antibody

Catalog Number: A01859

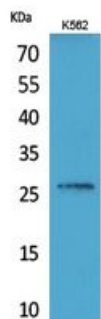
Overview

Product Name	Anti-FGF-16 Antibody
Reactive Species	Human, Mouse, Rat
Description	Boster Bio Anti-FGF-16 Antibody catalog # A01859. Tested in IHC, WB applications. This antibody reacts with Human, Mouse, Rat.
Application	IHC, WB
Clonality	Polyclonal
Formulation	Liquid in PBS containing 50% glycerol, 0.5% BSA and 0.02% sodium azide.
Storage Instructions	Store at -20°C for one year. For short term storage and frequent use, store at 4°C for up to one month. Avoid repeated freeze-thaw cycles.
Host	Rabbit
Uniprot ID	O43320

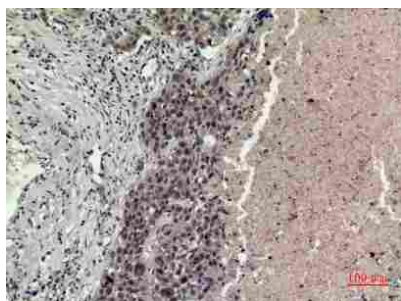
Technical Details

Immunogen	Synthesized peptide derived from the Internal region of human FGF-16.
Predicted Reactive Species	Bovine, Canine, Equine, Guinea Pig, Rabbit, Sheep, Zebrafish
Isotype	IgG
Form	Liquid
Concentration	This antibody's concentration is >0.5mg/ml.
Purification	Immunogen affinity purified
Suggested Dilutions	<p>Dilute the sample so that the expected range of concentrations fall within the detection range of this kit.</p> <p>If the expected range of concentration is unknown, a pilot test should be conducted to decide the optimal dilution ratio for your samples.</p> <p>Some PubMed article(s) citing the expression level of this target are as follows:</p> <p>Boster Bio's internal QC testing used:</p> <p>WB, 1:500-1:2000</p> <p>IHC-P, 1:100-1:300</p>

Anti-FGF-16 Antibody (A01859) Images



Western Blot (WB) analysis of K562 cells using FGF-16 Polyclonal antibody.



Immunohistochemistry (IHC) analysis of paraffin-embedded Human Lung, antibody was diluted at 1:100.

Submit a product review to Biocompare.com

Submit a review of this product to Biocompare.com to receive a \$20 Amazon.com giftcard! Your reviews help your fellow scientists make the right decisions. Thank you for your contribution.



Anti-FGF-16 Antibody