

## Anti-TOPBP1 Antibody Picoband®

Catalog Number: A01867-1

### About TOPBP1

This gene encodes a binding protein which interacts with the C-terminal region of topoisomerase II beta. This interaction suggests a supportive role for this protein in the catalytic reactions of topoisomerase II beta through transient breakages of DNA strands.

### Overview

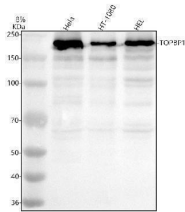
Product Name	Anti-TOPBP1 Antibody Picoband®
Reactive Species	Human, Mouse, Rat
Description	Boster Bio Anti-TOPBP1 Antibody Picoband® catalog # A01867-1. Tested in WB, IHC, ICC, IF, IP, ELISA applications. This antibody reacts with Human, Mouse, Rat. The brand Picoband indicates this is a premium antibody that guarantees superior quality, high affinity, and strong signals with minimal background in Western blot applications. Only our best-performing antibodies are designated as Picoband, ensuring unmatched performance.
Application	ELISA, IP, IF, IHC, ICC, WB
Clonality	Polyclonal
Formulation	Each vial contains 4 mg Trehalose, 0.9 mg NaCl, 0.2 mg Na <sub>2</sub> HPO <sub>4</sub> .
Storage Instructions	At -20°C for one year from date of receipt. After reconstitution, at 4°C for one month. It can also be aliquotted and stored frozen at -20°C for six months. Avoid repeated freezing and thawing.
Host	Rabbit
Uniprot ID	Q92547

### Technical Details

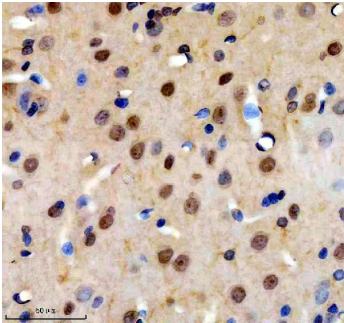
Immunogen	E.coli-derived human TOPBP1 recombinant protein (Position: E217-Q1459). Human TOPBP1 shares 75.3% amino acid (aa) sequence identity with mouse TOPBP1.
Form	Lyophilized
Concentration	Adding 0.2 ml of distilled water will yield a concentration of 500 ug/ml.
Purification	Immunogen affinity purified.
Suggested Dilutions	Western blot, 0.25-0.5 ug/ml, Human Immunohistochemistry(Paraffin-embedded Section), 2-5 ug/ml, Mouse, Rat Immunocytochemistry/Immunofluorescence, 5 ug/ml, Human Immunoprecipitation, 0.5-2 ug/ml, Human ELISA, 0.1-0.5 ug/ml



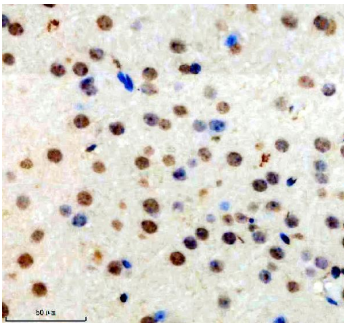
## Anti-TOPBP1 Antibody Picoband® (A01867-1) Images



Western blot analysis of TOPBP1 using anti-TOPBP1 antibody (A01867-1). Electrophoresis was performed on a 8% SDS-PAGE gel at 80V (Stacking gel) / 120V (Resolving gel) for 2 hours. The sample well of each lane was loaded with 30 ug of sample under reducing conditions. Lane 1: human Hela whole cell lysates, Lane 2: human HT1080 whole cell lysates, Lane 3: human HEL whole cell lysates. After electrophoresis, proteins were transferred to a nitrocellulose membrane at 150 mA for 50-90 minutes. Blocked the membrane with 5% non-fat milk/TBS for 1.5 hour at RT. The membrane was incubated with rabbit anti-TOPBP1 antigen affinity purified polyclonal antibody (A01867-1) at 0.5 ug/mL overnight at 4°C, then washed with TBS-0.1% Tween 3 times with 5 minutes each and probed with a goat anti-rabbit IgG-HRP secondary antibody at a dilution of 1:5000 for 1.5 hour at RT. The signal is developed using an ECL Plus Western Blotting Substrate (Catalog # AR1196-200) with Tanon 5200 system. A specific band was detected for TOPBP1 at approximately 170 kDa. The expected band size for TOPBP1 is at 170 kDa.

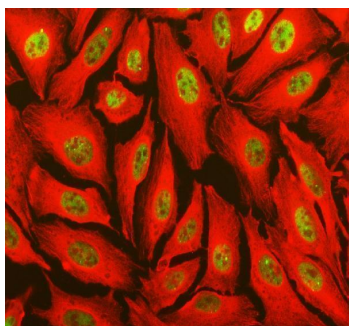


IHC analysis of TOPBP1 using anti-TOPBP1 antibody (A01867-1). TOPBP1 was detected in a paraffin-embedded section of rat brain tissue. Heat mediated antigen retrieval was performed in EDTA buffer (pH 8.0, epitope retrieval solution). The tissue section was blocked with 10% goat serum. The tissue section was then incubated with 2 ug/ml rabbit anti-TOPBP1 Antibody (A01867-1) overnight at 4°C. Peroxidase Conjugated Goat Anti-rabbit IgG was used as secondary antibody and incubated for 30 minutes at 37°C. The tissue section was developed using HRP Conjugated Rabbit IgG Super Vision Assay Kit (Catalog # SV0002) with DAB as the chromogen.

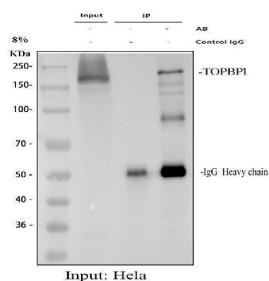


IHC analysis of TOPBP1 using anti-TOPBP1 antibody (A01867-1). TOPBP1 was detected in a paraffin-embedded section of mouse brain tissue. Heat mediated antigen retrieval was performed in EDTA buffer (pH 8.0, epitope retrieval solution). The tissue section was blocked with 10% goat serum. The tissue section was then incubated with 2 ug/ml rabbit anti-TOPBP1 Antibody (A01867-1) overnight at 4°C. Peroxidase Conjugated Goat Anti-rabbit IgG was used as secondary antibody and incubated for 30 minutes at 37°C. The tissue section was developed using HRP Conjugated Rabbit IgG Super Vision Assay Kit (Catalog # SV0002) with DAB as the chromogen.

IF analysis of TOPBP1 using anti-TOPBP1 antibody (A01867-1) and anti-Beta Tubulin antibody (M01857-3). TOPBP1 was detected in an immunocytochemical section of U2OS cells. Enzyme antigen retrieval was performed using IHC enzyme antigen retrieval reagent (AR0022) for 15 mins.



The cells were blocked with 10% goat serum. And then incubated with 5 ug/mL rabbit anti-TOPBP1 Antibody (A01867-1) and mouse anti-Beta Tubulin antibody (M01857-3) overnight at 4°C. DyLight®488 Conjugated Goat Anti-Rabbit IgG (BA1127) and Cy3 Conjugated Goat Anti-Mouse IgG (BA1031) were used as secondary antibody at 1:500 dilution and incubated for 30 minutes at 37°C. Visualize using a fluorescence microscope and filter sets appropriate for the label used.



Immunoprecipitating (IP) TOPBP1 in HeLa whole cell lysate. Western blot analysis of TOPBP1 using anti-TOPBP1 antibody (A01867-1); Lane 1: HeLa whole cell lysates (30ug); Lane 2: Rabbit control IgG instead of anti-TOPBP1 antibody in HeLa whole cell lysate; Lane 3: anti-TOPBP1 antibody (2ug) + HeLa whole cell lysate (500ug). After electrophoresis, proteins were transferred to a membrane. Then the membrane was incubated with rabbit anti-TOPBP1 antigen affinity purified polyclonal antibody (A01867-1) at a dilution of 0.5 ug/mL and probed with a goat anti-rabbit IgG-HRP secondary antibody (Catalog # BA1054). The signal is developed using ECL Plus Western Blotting Substrate (Catalog # AR1196-200). A specific band was detected for TOPBP1 at approximately 170 kDa. The expected band size for TOPBP1 is at 170 kDa.

## Submit a product review to Biocompare.com

Submit a review of this product to Biocompare.com to receive a \$20 Amazon.com giftcard! Your reviews help your fellow scientists make the right decisions. Thank you for your contribution.



### Anti-TOPBP1 Antibody

For Research Use Only. Not for use in diagnostic procedures.