

Anti-Kallikrein 6/KLK6 Antibody Picoband™

Catalog Number: A01882-2

About KLK6

KLK6 (Kallikrein-related peptidase 6), also called KALLIKREIN 6, NEUROSIN, PROTEASE M, ZYME or PRSS9, is a protein that in humans is encoded by the KLK6 gene. This gene is one of the fifteen kallikrein subfamily members located in a cluster on chromosome 19. The encoded enzyme is regulated by steroid hormones. Northern blot analysis revealed that the PRSS9 mRNA was expressed in several primary tumors and cell lines from mammary, prostate, and ovarian cancers, but was not detected in any metastases of these cancers. The KLK6 gene is mapped on 19q13.41. In tissue culture, the enzyme has been found to generate amyloidogenic fragments from the amyloid precursor protein, suggesting a potential for involvement in Alzheimer's disease. Upon cellular stress, neurosin was released from mitochondria to the cytosol, which resulted in the increase of degraded alpha-synuclein species. Neurosin may play a significant role in physiologic alpha-synuclein degradation and also in the pathogenesis of synucleinopathies.

Overview

Product Name	Anti-Kallikrein 6/KLK6 Antibody Picoband™
Reactive Species	Human
Description	Boster Bio Anti-Kallikrein 6/KLK6 Antibody Picoband™ catalog # A01882-2. Tested in ELISA, WB applications. This antibody reacts with Human.
Application	ELISA, WB
Clonality	Polyclonal
Formulation	Each vial contains 4mg Trehalose, 0.9mg NaCl, 0.2mg Na ₂ HPO ₄ , 0.05mg NaN ₃ .
Storage Instructions	Store at -20°C for one year from date of receipt. After reconstitution, at 4°C for one month. It can also be aliquotted and stored frozen at -20°C for six months. Avoid repeated freeze-thaw cycles.
Host	Rabbit
Uniprot ID	Q92876

Technical Details

Immunogen	E. coli-derived human Kallikrein 6 recombinant protein (Position: L22-K244).
Predicted Reactive Species	Human
Recommended Detection Systems	Boster recommends Enhanced Chemiluminescent Kit with anti-Rabbit IgG (EK1002) for Western blot.
Cross Reactivity	No cross-reactivity with other proteins.
Isotype	Rabbit IgG

Form	Lyophilized
Concentration	Adding 0.2 ml of distilled water will yield a concentration of 500 ug/ml.
Purification	Immunogen affinity purified.
Suggested Dilutions	<p>Dilute the sample so that the expected range of concentrations fall within the detection range of this kit.</p> <p>If the expected range of concentration is unknown, a pilot test should be conducted to decide the optimal dilution ratio for your samples.</p> <p>Some PubMed article(s) citing the expression level of this target are as follows:</p> <p>Boster Bio's internal QC testing used:</p> <p>Western blot, 0.1-0.5ug/ml</p> <p>Direct ELISA, 0.1-0.5ug/ml</p>

Anti-Kallikrein 6/KLK6 Antibody Picoband™ (A01882-2) Images

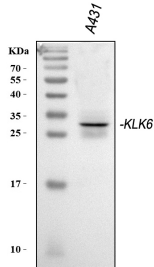


Figure 1. Western blot analysis of Kallikrein 6/KLK6 using anti-Kallikrein 6/KLK6 antibody (A01882-2). Electrophoresis was performed on a 5-20% SDS-PAGE gel at 70V (Stacking gel) / 90V (Resolving gel) for 2-3 hours. The sample well of each lane was loaded with 30 ug of sample under reducing conditions.

Lane 1: human A431 whole cell lysates.

After electrophoresis, proteins were transferred to a nitrocellulose membrane at 150 mA for 50-90 minutes. Blocked the membrane with 5% non-fat milk/TBS for 1.5 hour at RT. The membrane was incubated with rabbit anti-Kallikrein 6/KLK6 antigen affinity purified polyclonal antibody (Catalog # A01882-2) at 0.5 ug/mL overnight at 4°C, then washed with TBS-0.1%Tween 3 times with 5 minutes each and probed with a goat anti-rabbit IgG-HRP secondary antibody at a dilution of 1:5000 for 1.5 hour at RT. The signal is developed using an Enhanced Chemiluminescent detection (ECL) kit (Catalog # EK1002) with Tanon 5200 system. A specific band was detected for Kallikrein 6/KLK6 at approximately 29 kDa. The expected band size for Kallikrein 6/KLK6 is at 27 kDa.

Submit a product review to Biocompare.com

Submit a review of this product to Biocompare.com to receive a \$20 Amazon.com giftcard! Your reviews help your fellow scientists make the right decisions. Thank you for your contribution.



Anti-Kallikrein 6/KLK6 Antibody™