

Anti-PP2A-Alpha (phospho-Y307) PPP2CA Antibody

Catalog Number: A01893Y307

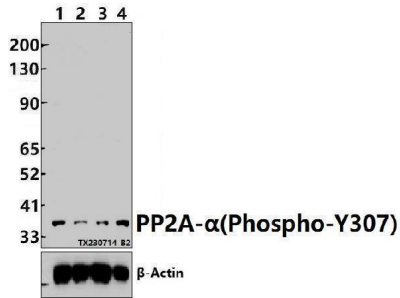
Overview

Product Name	Anti-PP2A-Alpha (phospho-Y307) PPP2CA Antibody
Reactive Species	Human, Mouse, Rat
Description	Boster Bio Anti-PP2A-Alpha (phospho-Y307) PPP2CA Antibody catalog # A01893Y307. Tested in WB applications. This antibody reacts with Human,Mouse,Rat.
Application	WB
Clonality	Polyclonal
Formulation	Rabbit IgG, 1mg/ml in PBS with 0.02% sodium azide, 50% glycerol, pH7.2
Storage Instructions	Store at -20°C for one year. For short term storage and frequent use, store at 4°C for up to one month. Avoid repeated freeze-thaw cycles.
Host	Rabbit
Uniprot ID	P67775

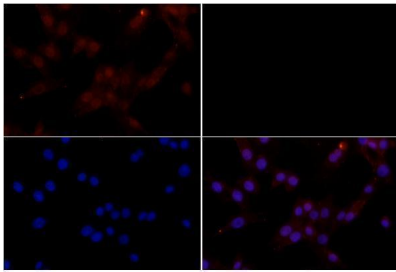
Technical Details

Immunogen	Synthetic phosphopeptide derived from human PP2A-alpha around the phosphorylation site of Tyrosine 307.
Cross Reactivity	No cross reactivity with other proteins.
Isotype	IgG
Form	Liquid
Concentration	1 mg/ml
Purification	The antibody was affinity-purified from rabbit antiserum by affinity-chromatography using epitope-specific immunogen and the purity is > 95% (by SDS-PAGE).
Suggested Dilutions	WB: 1:500-1:1000

Anti-PP2A-Alpha (phospho-Y307) PPP2CA Antibody (A01893Y307) Images



Western blot (WB) analysis of PP2A-alpha (Phospho-Y307) polyclonal antibody at 1:500 dilution Lane1:HEK293T whole cell lysate(30ug) Lane2:HEK293T treated with lambda-phosphatase whole cell lysate(30ug) Lane3:3T3-L1 whole cell lysate(30ug) Lane4:PC12 whole cell lysate(30ug)



Immunofluorescence analysis of NIH-3T3 cells using PP2A-alpha (Phospho-Y307) pAb at dilution of 1:200 (40x lens).

Submit a product review to Biocompare.com

Submit a review of this product to Biocompare.com to receive a \$20 Amazon.com giftcard! Your reviews help your fellow scientists make the right decisions. Thank you for your contribution.



Anti-PP2A-Alpha (phospho-Y307) PPP2CA Antibody

For Research Use Only. Not for use in diagnostic procedures.