

## Anti-Phospho-Cdc25B (S323) Antibody

Catalog Number: A01899S323

### About CDC25B

Adapter protein involved in asymmetrical cell division and cell polarization processes. Seems to play a central role in the formation of epithelial tight junctions. Targets the phosphatase PTEN to cell junctions By similarity. Association with PARD6B may prevent the interaction of PARD3 with F11R/JAM1, thereby preventing tight junction assembly. The PARD6-PARD3 complex links GTP-bound Rho small GTPases to atypical protein kinase C proteins. Required for establishment of neuronal polarity and normal axon formation in cultured hippocampal neurons.

Joberty G., Nat. Cell Biol. 2:531-539(2000).

Fang C.M., Cell Res. 11:223-229(2001).

Kohjima M., Biochem. Biophys. Res. Commun. 299:641-646(2002).

### Overview

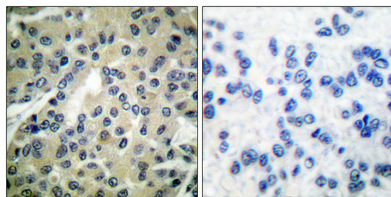
Product Name	Anti-Phospho-Cdc25B (S323) Antibody
Reactive Species	Human, Mouse, Rat
Description	Boster Bio Anti-Phospho-Cdc25B (S323) Antibody catalog # A01899S323. Tested in ELISA, IHC-P, WB applications. This antibody reacts with Human, Mouse, Rat.
Application	ELISA, IHC-P, WB
Clonality	Polyclonal
Formulation	Liquid in PBS containing 50% glycerol, 0.5% BSA and 0.02% sodium azide.
Storage Instructions	Store at -20°C for one year. For short term storage and frequent use, store at 4°C for up to one month. Avoid repeated freeze-thaw cycles.
Host	Rabbit
Uniprot ID	P30305

### Technical Details

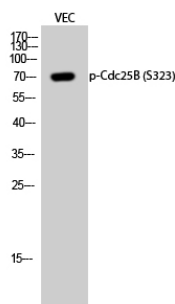
Immunogen	Synthesized peptide derived from human Cdc25B around the phosphorylation site of S323.
Predicted Reactive Species	Boar, Bovine, Canine, Golden Hamster
Cross Reactivity	No cross reactivity with other proteins.
Isotype	IgG
Form	Liquid
Concentration	1 mg/ml

Purification	The antibody was affinity-purified from rabbit antiserum by affinity-chromatography using epitope-specific immunogen.
Suggested Dilutions	<p>Dilute the sample so that the expected range of concentrations fall within the detection range of this kit.</p> <p>If the expected range of concentration is unknown, a pilot test should be conducted to decide the optimal dilution ratio for your samples.</p> <p>Some PubMed article(s) citing the expression level of this target are as follows:</p> <p>Boster Bio's internal QC testing used:</p> <p>WB 1:500-1:2000</p> <p>ELISA 1:20000</p>

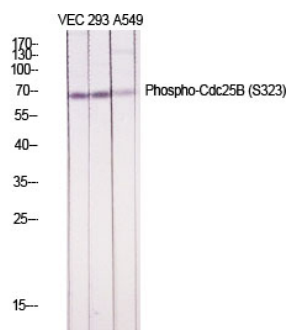
## Anti-Phospho-Cdc25B (S323) Antibody (A01899S323) Images



Immunohistochemical analysis of paraffin-embedded Human breast cancer. Antibody was diluted at 1:100 (4°C overnight). High-pressure and temperature Tris-EDTA, pH8.0 was used for antigen retrieval. Negative control (right) obtained from antibody was pre-absorbed by immunogen peptide.



Western blot analysis of VEC cells using Phospho-Cdc25B (S323) Polyclonal Antibody diluted at 1:1000



Western blot analysis of various cells using Phospho-Cdc25B (S323) Polyclonal Antibody diluted at 1:1000

## Submit a product review to Biocompare.com

Submit a review of this product to Biocompare.com to receive a \$20 Amazon.com giftcard! Your reviews help your fellow scientists make the right decisions. Thank you for your contribution.



Anti-Phospho-Cdc25B (S323) Antibody