

## Anti-PDHA1/Pdh E1Alpha Antibody

Catalog Number: A01906-1

### Overview

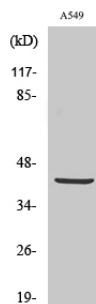
Product Name	Anti-PDHA1/Pdh E1Alpha Antibody
Reactive Species	Human, Mouse, Rat
Description	Boster Bio Anti-PDHA1/Pdh E1Alpha Antibody catalog # A01906-1. Tested in ELISA, IHC-P, WB applications. This antibody reacts with Human, Mouse, Rat.
Application	ELISA, IHC-P, WB
Clonality	Polyclonal
Formulation	Liquid in PBS containing 50% glycerol, 0.5% BSA and 0.02% sodium azide.
Storage Instructions	Store at -20°C for one year. For short term storage and frequent use, store at 4°C for up to one month. Avoid repeated freeze-thaw cycles.
Host	Rabbit
Uniprot ID	P08559

### Technical Details

Immunogen	Synthesized peptide derived from human PDHA1
Cross Reactivity	No cross reactivity with other proteins.
Isotype	IgG
Form	Liquid
Concentration	1 mg/ml
Purification	The antibody was affinity-purified from rabbit antiserum by affinity-chromatography using an epitope-specific immunogen.
Suggested Dilutions	Dilute the sample so that the expected range of concentrations fall within the detection range of this kit. If the expected range of concentration is unknown, a pilot test should be conducted to decide the optimal dilution ratio for your samples. Some PubMed article(s) citing the expression level of this target are as follows: Boster Bio's internal QC testing used: WB 1:500-1:2000 IHC 1:100-1:300 ELISA 1:40000



## Anti-PDHA1/Pdh E1Alpha Antibody (A01906-1) Images



Western blot analysis of various cells using PDHA1 Polyclonal Antibody diluted at 1:2000

### Submit a product review to Biocompare.com

Submit a review of this product to Biocompare.com to receive a \$20 Amazon.com giftcard! Your reviews help your fellow scientists make the right decisions. Thank you for your contribution.



Anti-PDHA1/Pdh E1Alpha Antibody