

Anti-PDH-E1 alpha PDHA1 Monoclonal Antibody

Catalog Number: A01906-2

About PDHA1

CaM Kinase IV (also known as CAM kinase-GR and CaMK IV) is a calcium/ calmodulin-dependent protein kinase belonging to a proposed calcium-triggered signaling cascade. This kinase may be involved in the transcriptional regulation of microtubule dynamics. In vitro, CaMK IV phosphorylates CREB1, CREBBP, PRM2, MEF2A, MEF2D and STMN1/OP18. CaMK IV may also be involved in spermatogenesis and may play a role in the consolidation/ retention of hippocampus-dependent long-term memory. CaMK IV must be phosphorylated to be maximally active and is phosphorylated by CAMKK1 or CAMKK2. In addition autophosphorylation of the N-terminus is required for full activation. Autophosphorylation of Ser-336 allows the kinase to switch to a Ca(2+)/calmodulin-independent state. Most likely the kinase is inactivated by the serine/ threonine protein phosphatase 2A. CaMK IV is a monomer that is located within the cytoplasm and nucleus and substantial localization occurs in certain neuronal nuclei. In spermatids CaMK IV is associated with chromatin and the nuclear matrix. CaMK IV is also specifically expressed in epithelial ovarian cancer tissue.

Overview

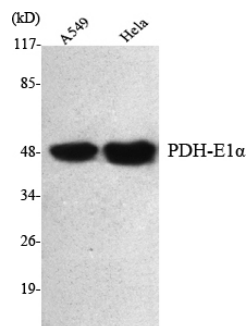
Product Name	Anti-PDH-E1 alpha PDHA1 Monoclonal Antibody
Reactive Species	Bovine, Human, Mouse, Pig, Rat
Description	Boster Bio Anti-PDH-E1 alpha PDHA1 Monoclonal Antibody catalog # A01906-2. Tested in IF, IHC, WB applications. This antibody reacts with Bovine, Human, Mouse, Pig, Rat.
Application	IF, IHC, WB
Clonality	Monoclonal
Formulation	Purified mouse monoclonal in buffer containing 0.1M Tris-Glycine (pH 7.4, 150 mM NaCl) with 0.2% sodium azide, 50% glycerol.
Storage Instructions	Store at -20°C for one year. For short term storage and frequent use, store at 4°C for up to one month. Avoid repeated freeze-thaw cycles.
Host	Mouse
Uniprot ID	P08559

Technical Details

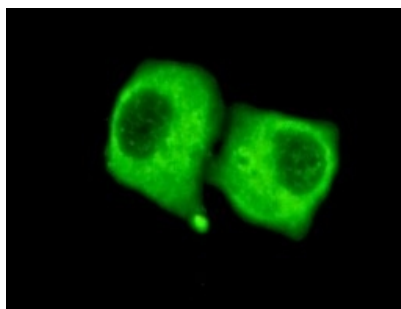
Immunogen	Synthesized peptide derived from human PDHA1
Predicted Reactive Species	Bovine, Canine, Chimpanzee
Cross Reactivity	No cross reactivity with other proteins.
Isotype	IgG
Form	Liquid

Concentration	1 mg/ml
Purification	Protein A purified
Suggested Dilutions	<p>Dilute the sample so that the expected range of concentrations fall within the detection range of this kit.</p> <p>If the expected range of concentration is unknown, a pilot test should be conducted to decide the optimal dilution ratio for your samples.</p> <p>Some PubMed article(s) citing the expression level of this target are as follows:</p> <p>Boster Bio's internal QC testing used:</p> <p>WB, 1:1000-1:2000</p> <p>IF, 1:100-1:500</p>

Anti-PDH-E1 alpha PDHA1 Monoclonal Antibody (A01906-2) Images



Western Blot (WB) analysis using PDH-E1alpha Monoclonal antibody against A549, HeLa cell lysate.



Immunofluorescence (IF) analysis of HeLa cells using PDH-E1alpha Monoclonal antibody.

Submit a product review to Biocompare.com

Submit a review of this product to Biocompare.com to receive a \$20 Amazon.com giftcard! Your reviews help your fellow scientists make the right decisions. Thank you for your contribution.



Anti-PDH-E1 alpha PDHA1 Monoclonal Antibody