

Anti-PDH E1 Alpha/PDHA1 Antibody

Catalog Number: A01906-4

About PDHA1

The pyruvate dehydrogenase (PDH) complex is a nuclear-encoded mitochondrial multienzyme complex that catalyzes the overall conversion of pyruvate to acetyl-CoA and CO₂, and provides the primary link between glycolysis and the tricarboxylic acid (TCA) cycle. The PDH complex is composed of multiple copies of three enzymatic components: pyruvate dehydrogenase (E1), dihydrolipoamide acetyltransferase (E2) and lipoamide dehydrogenase (E3). The E1 enzyme is a heterotetramer of two alpha and two beta subunits. This gene encodes the E1 alpha 1 subunit containing the E1 active site, and plays a key role in the function of the PDH complex. Mutations in this gene are associated with pyruvate dehydrogenase E1-alpha deficiency and X-linked Leigh syndrome. Alternatively spliced transcript variants encoding different isoforms have been found for this gene.

Overview

Product Name	Anti-PDH E1 Alpha/PDHA1 Antibody
Reactive Species	Human, Mouse, Rat
Description	Boster Bio Anti-PDH E1 Alpha/PDHA1 Antibody catalog # A01906-4. Tested in WB, IHC, ICC, IF, IP, ELISA applications. This antibody reacts with Human, Mouse, Rat.
Application	ELISA, IP, IF, IHC, ICC, WB
Clonality	Polyclonal
Formulation	500 ug/ml antibody with PBS, 0.02% NaN ₃ , 1 mg stabilizing protein and 50% glycerol *This antibody is supplied in a stabilized formulation. Compatibility with conjugation reactions depends on the chemistry of the conjugation method used. For conjugation methods that are not compatible with the stabilizing components present in this formulation, a carrier-free antibody format is required.
Storage Instructions	12 months from date of receipt at -20°C as supplied. 6 months 2 to 8°C after reconstitution. Avoid repeated freezing and thawing.
Host	Rabbit
Uniprot ID	P08559

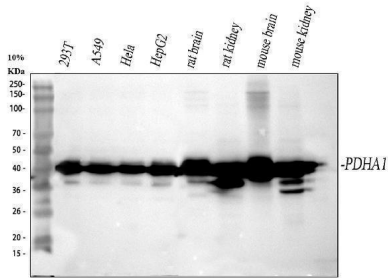
Technical Details

Immunogen	E.coli-derived human PDH E1 Alpha/PDHA1 recombinant protein (Position: R45-S390).
Form	Liquid
Concentration	500 ug/ml
Purification	Immunogen affinity purified.

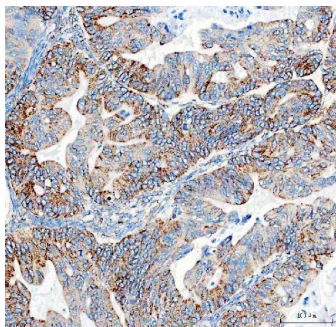
Suggested Dilutions

Western blot, 1:500-2000
Immunohistochemistry, 1:50-400
Immunocytochemistry/Immunofluorescence, 1:50-400
Immunoprecipitation, 1:50
ELISA, 1:100-1000

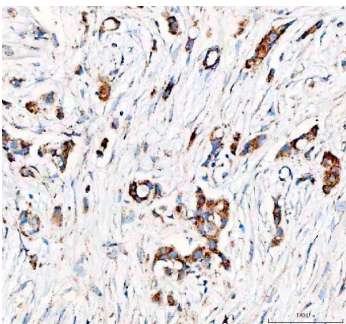
Anti-PDH E1 Alpha/PDHA1 Antibody (A01906-4) Images



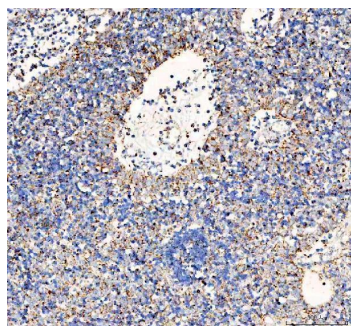
Western blot analysis of PDH E1 Alpha/PDHA1 using anti-PDH E1 Alpha/PDHA1 antibody (A01906-4). Electrophoresis was performed on a 10% SDS-PAGE gel at 80V (Stacking gel) / 120V (Resolving gel) for 2 hours. The sample well of each lane was loaded with 30 ug of sample under reducing conditions. Lane 1: human 293T whole cell lysates, Lane 2: human A549 whole cell lysates, Lane 3: human Hela whole cell lysates, Lane 4: human HepG2 whole cell lysates, Lane 5: rat brain tissue lysates, Lane 6: rat kidney tissue lysates, Lane 7: mouse brain tissue lysates, Lane 8: mouse kidney tissue lysates. After electrophoresis, proteins were transferred to a nitrocellulose membrane at 150 mA for 50-90 minutes. Blocked the membrane with 5% non-fat milk/TBS for 1.5 hour at RT. The membrane was incubated with rabbit anti-PDH E1 Alpha/PDHA1 antigen affinity purified polyclonal antibody (A01906-4) at 1:1000 overnight at 4°C, then washed with TBS-0.1%Tween 3 times with 5 minutes each and probed with a goat anti-rabbit IgG-HRP secondary antibody at a dilution of 1:5000 for 1.5 hour at RT. The signal is developed using an ECL Plus Western Blotting Substrate (Catalog # AR1196-200) with Tanon 5200 system. A specific band was detected for PDH E1 Alpha/PDHA1 at approximately 40 kDa. The expected band size for PDH E1 Alpha/PDHA1 is at 43 kDa.



IHC analysis of PDH E1 Alpha/PDHA1 using anti-PDH E1 Alpha/PDHA1 antibody (A01906-4). PDH E1 Alpha/PDHA1 was detected in a paraffin-embedded section of human ovarian serous adenocarcinoma tissue. Heat mediated antigen retrieval was performed in EDTA buffer (pH 8.0, epitope retrieval solution). The tissue section was blocked with 10% goat serum. The tissue section was then incubated with 1:100 rabbit anti-PDH E1 Alpha/PDHA1 Antibody (A01906-4) overnight at 4°C. Peroxidase Conjugated Goat Anti-rabbit IgG was used as secondary antibody and incubated for 30 minutes at 37°C. The tissue section was developed using HRP Conjugated Rabbit IgG Super Vision Assay Kit (Catalog # SV0002) with DAB as the chromogen.



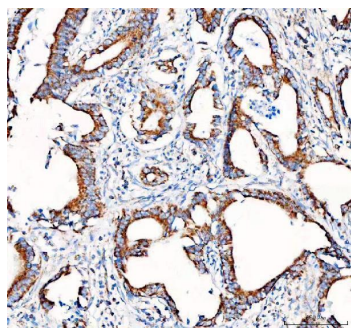
IHC analysis of PDH E1 Alpha/PDHA1 using anti-PDH E1 Alpha/PDHA1 antibody (A01906-4). PDH E1 Alpha/PDHA1 was detected in a paraffin-embedded section of human breast cancer tissue. Heat mediated antigen retrieval was performed in EDTA buffer (pH 8.0, epitope retrieval solution). The tissue section was blocked with 10% goat serum. The tissue section was then incubated with 1:100 rabbit anti-PDH E1 Alpha/PDHA1 Antibody (A01906-4) overnight at 4°C. Peroxidase Conjugated Goat Anti-rabbit IgG was used as secondary antibody and incubated for 30 minutes at 37°C. The tissue section was developed using HRP Conjugated Rabbit IgG Super Vision Assay Kit (Catalog # SV0002) with DAB as the chromogen.



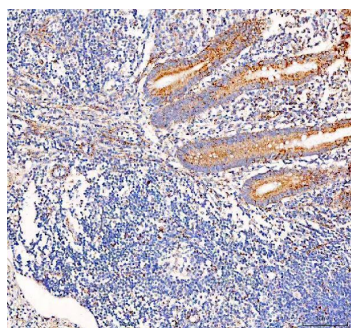
IHC analysis of PDH E1 Alpha/PDHA1 using anti-PDH E1 Alpha/PDHA1 antibody (A01906-4). PDH E1 Alpha/PDHA1 was detected in a paraffin-embedded section of human spleen tissue. Heat mediated antigen retrieval was performed in EDTA buffer (pH 8.0, epitope retrieval solution). The tissue section was blocked with 10% goat serum. The tissue section was then incubated with 1:100 rabbit anti-PDH E1 Alpha/PDHA1 Antibody (A01906-4) overnight at 4°C. Peroxidase Conjugated Goat Anti-rabbit IgG was used as secondary antibody and incubated for 30 minutes at 37°C. The tissue section was developed using HRP Conjugated Rabbit IgG Super Vision Assay Kit (Catalog # SV0002) with DAB as the chromogen.



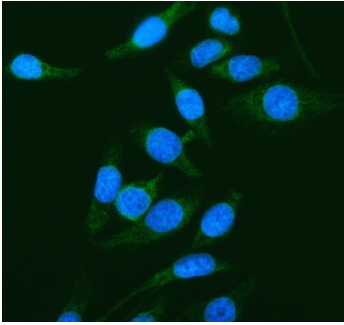
IHC analysis of PDH E1 Alpha/PDHA1 using anti-PDH E1 Alpha/PDHA1 antibody (A01906-4). PDH E1 Alpha/PDHA1 was detected in a paraffin-embedded section of human testicular germ cell tumors tissue. Heat mediated antigen retrieval was performed in EDTA buffer (pH 8.0, epitope retrieval solution). The tissue section was blocked with 10% goat serum. The tissue section was then incubated with 1:100 rabbit anti-PDH E1 Alpha/PDHA1 Antibody (A01906-4) overnight at 4°C. Peroxidase Conjugated Goat Anti-rabbit IgG was used as secondary antibody and incubated for 30 minutes at 37°C. The tissue section was developed using HRP Conjugated Rabbit IgG Super Vision Assay Kit (Catalog # SV0002) with DAB as the chromogen.



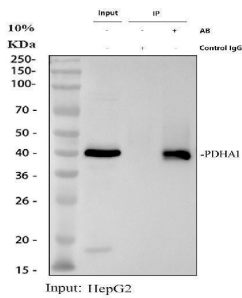
IHC analysis of PDH E1 Alpha/PDHA1 using anti-PDH E1 Alpha/PDHA1 antibody (A01906-4). PDH E1 Alpha/PDHA1 was detected in a paraffin-embedded section of human colorectal adenocarcinoma tissue. Heat mediated antigen retrieval was performed in EDTA buffer (pH 8.0, epitope retrieval solution). The tissue section was blocked with 10% goat serum. The tissue section was then incubated with 1:100 rabbit anti-PDH E1 Alpha/PDHA1 Antibody (A01906-4) overnight at 4°C. Peroxidase Conjugated Goat Anti-rabbit IgG was used as secondary antibody and incubated for 30 minutes at 37°C. The tissue section was developed using HRP Conjugated Rabbit IgG Super Vision Assay Kit (Catalog # SV0002) with DAB as the chromogen.



IHC analysis of PDH E1 Alpha/PDHA1 using anti-PDH E1 Alpha/PDHA1 antibody (A01906-4). PDH E1 Alpha/PDHA1 was detected in a paraffin-embedded section of human appendix carcinoid tissue. Heat mediated antigen retrieval was performed in EDTA buffer (pH 8.0, epitope retrieval solution). The tissue section was blocked with 10% goat serum. The tissue section was then incubated with 1:100 rabbit anti-PDH E1 Alpha/PDHA1 Antibody (A01906-4) overnight at 4°C. Peroxidase Conjugated Goat Anti-rabbit IgG was used as secondary antibody and incubated for 30 minutes at 37°C. The tissue section was developed using HRP Conjugated Rabbit IgG Super Vision Assay Kit (Catalog # SV0002) with DAB as the chromogen.



IF analysis of PDH E1 Alpha/PDHA1 using anti-PDH E1 Alpha/PDHA1 antibody (A01906-4). PDH E1 Alpha/PDHA1 was detected in an immunocytochemical section of human HeLa cells. Enzyme antigen retrieval was performed using IHC enzyme antigen retrieval reagent (AR0022) for 15 mins. The cells were blocked with 10% goat serum. And then incubated with 1:100 rabbit anti-PDH E1 Alpha/PDHA1 Antibody (A01906-4) overnight at 4°C. DyLight®488 Conjugated Goat Anti-Rabbit IgG (BA1127) was used as secondary antibody at 1:500 dilution and incubated for 30 minutes at 37°C. The section was counterstained with DAPI. Visualize using a fluorescence microscope and filter sets appropriate for the label used.



Immunoprecipitating (IP) PDH E1 Alpha/PDHA1 in HepG2 whole cell lysate. Western blot analysis of PDH E1 Alpha/PDHA1 using anti-PDH E1 Alpha/PDHA1 antibody (A01906-4); Lane 1: HepG2 whole cell lysates (30ug); Lane 2: Rabbit control IgG instead of anti-PDH E1 Alpha/PDHA1 antibody in HepG2 whole cell lysate; Lane 3: anti-PDH E1 Alpha/PDHA1 antibody (2ug) + HepG2 whole cell lysate (500ug). After electrophoresis, proteins were transferred to a membrane. Then the membrane was incubated with rabbit anti-PDH E1 Alpha/PDHA1 antigen affinity purified polyclonal antibody (A01906-4) at a dilution of 0.5 ug/mL and probed with a goat anti-rabbit IgG-HRP secondary antibody (Light Chain). The signal is developed using ECL Plus Western Blotting Substrate (Catalog # AR1196-200). A specific band was detected for PDH E1 Alpha/PDHA1 at approximately 40 kDa. The expected band size for PDH E1 Alpha/PDHA1 is at 43 kDa.

Submit a product review to Biocompare.com

Submit a review of this product to Biocompare.com to receive a \$20 Amazon.com giftcard! Your reviews help your fellow scientists make the right decisions. Thank you for your contribution.



Anti-PDH E1 Alpha/PDHA1 Antibody

For Research Use Only. Not for use in diagnostic procedures.