

## Anti-WD repeat-containing protein 5 WDR5 Antibody

Catalog Number: A01910

### About WDR5

WD repeat domain 5 (WDR5) is a member of the WD repeat protein family, which is involved in a variety of cellular processes, including cell cycle progression, signal transduction, apoptosis, and gene regulation. WDR5, also known as BIG-3, is expressed in the developing growth plate, accelerates chondrocyte and osteoblast differentiation in vitro, and regulates osteoblast differentiation during embryonic bone development. WDR5 interacts with the pluripotency factor Oct4/POU5F1 and is required for the efficient formation of induced pluripotent stem (iPS) cells.

### Overview

Product Name	Anti-WD repeat-containing protein 5 WDR5 Antibody
Reactive Species	Human
Description	Boster Bio Anti-WD repeat-containing protein 5 WDR5 Antibody (Catalog # A01910). Tested in ELISA, WB, ICC, IF applications. This antibody reacts with Human.
Application	ELISA, IF, ICC, WB
Clonality	Polyclonal
Formulation	WDR5 Antibody is supplied in PBS containing 0.02% sodium azide.
Storage Instructions	WDR5 antibody can be stored at 4°C for three months and -20°C, stable for up to one year. Avoid repeated freeze-thaw cycles. Antibodies should not be exposed to prolonged high temperatures.
Host	Rabbit
Uniprot ID	P61964

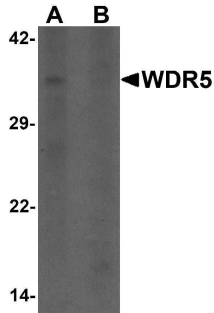
### Technical Details

Immunogen	WDR5 antibody was raised against a 19 amino acid synthetic peptide near the amino terminus of human WDR5. The immunogen is located within the first 50 amino acids of WDR5.
Predicted Reactive Species	Bovine, Mouse, Rat
Cross Reactivity	WDR5 antibody is human specific. WDR5 antibody is predicted to not cross-react with other WDR family members.
Isotype	IgG
Form	Liquid
Concentration	1 mg/mL
Purification	WDR5 Antibody is affinity chromatography purified via peptide column.

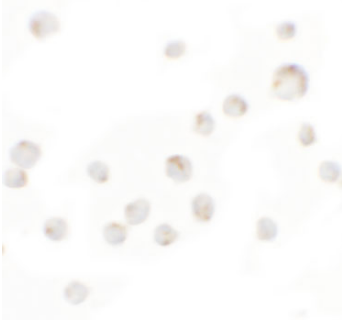
Suggested Dilutions

WDR5 antibody can be used for detection of WDR5 by Western blot at 1 ug/mL. Antibody can also be used for immunocytochemistry starting at 5 ug/mL. For immunofluorescence start at 5 ug/mL. Antibody validated: Western Blot in human samples; Immunocytochemistry in human samples and Immunofluorescence in human samples. All other applications and species not yet tested. Optimal dilutions for each application should be determined by the researcher.

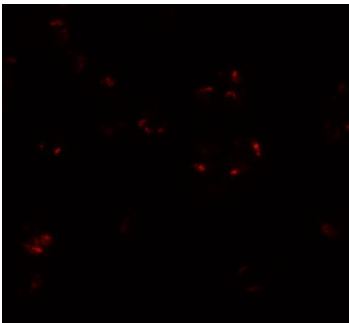
## Anti-WD repeat-containing protein 5 WDR5 Antibody (A01910) Images



Western blot analysis of WDR5 in 293 cell lysate with WDR5 antibody at 1 ug/ml in (A) the absence and (B) the presence of blocking peptide.



Immunocytochemistry of WDR5 in 293 cells with WDR5 antibody at 5 ug/mL.



Immunofluorescence of WDR5 in 293 cells with WDR5 antibody at 20 ug/mL.

### Submit a product review to [Biocompare.com](https://www.biocompare.com)

Submit a review of this product to [Biocompare.com](https://www.biocompare.com) to receive a \$20 Amazon.com giftcard! Your reviews help your fellow scientists make the right decisions. Thank you for your contribution.



Anti-WD repeat-containing protein 5 WDR5 Antibody

For Research Use Only. Not for use in diagnostic procedures.