

## Anti-Phospho-TH (S62) Antibody

Catalog Number: A01917S62

### About TH

The pyruvate dehydrogenase complex catalyzes the overall conversion of pyruvate to acetyl-CoA and CO<sub>2</sub>, and thereby links the glycolytic pathway to the tricarboxylic cycle.

Song B.J., Submitted (APR-1990).

Bentley D.R., Nature 434:325-337(2005).

Comb M.J., Cell 131:1190-1203(2007).

### Overview

Product Name	Anti-Phospho-TH (S62) Antibody
Reactive Species	Human, Monkey, Mouse, Rat
Description	Boster Bio Anti-Phospho-TH (S62) Antibody catalog # A01917S62. Tested in ELISA, IHC, WB applications. This antibody reacts with Human, Monkey, Mouse, Rat.
Application	ELISA, IHC, WB
Clonality	Polyclonal
Formulation	Liquid in PBS containing 50% glycerol, 0.5% BSA and 0.02% sodium azide.
Storage Instructions	Store at -20°C for one year. For short term storage and frequent use, store at 4°C for up to one month. Avoid repeated freeze-thaw cycles.
Host	Rabbit
Uniprot ID	P07101

### Technical Details

Immunogen	Synthesized peptide derived from human TH around the phosphorylation site of S62.
Predicted Reactive Species	Boar, Bovine, Canine, Golden Hamster
Cross Reactivity	No cross reactivity with other proteins.
Isotype	IgG
Form	Liquid
Concentration	1 mg/ml
Purification	The antibody was affinity-purified from rabbit antiserum by affinity-chromatography using epitope-

	specific immunogen.
Suggested Dilutions	<p>Dilute the sample so that the expected range of concentrations fall within the detection range of this kit.</p> <p>If the expected range of concentration is unknown, a pilot test should be conducted to decide the optimal dilution ratio for your samples.</p> <p>Some PubMed article(s) citing the expression level of this target are as follows:</p> <p>Boster Bio's internal QC testing used:</p> <p>WB 1:500-1:2000</p> <p>IHC 1:100-1:300</p> <p>ELISA 1:5000</p>

## Anti-Phospho-TH (S62) Antibody (A01917S62) Images

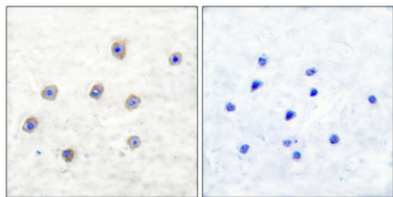


Figure 2. Immunohistochemistry validation of TH using Anti-Phospho-TH (S62) Antibody (A01917S62).

Immunohistochemical analysis of paraffin-embedded Human breast cancer. Antibody was diluted at 1:100 (4°C)

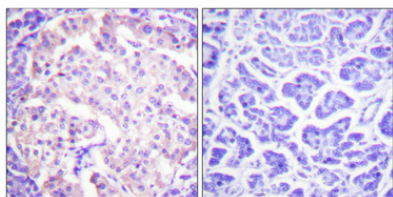


Figure 3. Immunohistochemistry validation of TH using Anti-Phospho-TH (S62) Antibody (A01917S62).

Immunohistochemical analysis of paraffin-embedded Human pancreas. Antibody was diluted at 1:100 (4°C)

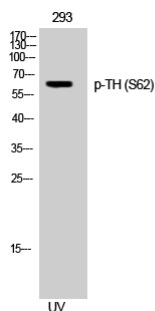


Figure 1. Western blotting validation for Anti-Phospho-TH (S62) Antibody A01917S62

Western Blot (WB) analysis of 293 cells using Phospho-TH (S62) polyclonal antibody. Electrophoresis was performed on a SDS-PAGE gel. To determine SDS-PAGE gel concentration

## Submit a product review to Biocompare.com

Submit a review of this product to Biocompare.com to receive a \$20 Amazon.com giftcard! Your reviews help your fellow scientists make the right decisions. Thank you for your contribution.



Anti-Phospho-TH (S62) Antibody