

Anti-IKK alpha CHUK Antibody

Catalog Number: A01918

About CHUK

Nuclear factor kappa B (NF-kappaB) is a ubiquitous transcription factor and an essential mediator of gene expression during activation of immune and inflammatory responses. NF-kappaB mediates the expression of a great variety of genes in response to extracellular stimuli including IL-1, TNFa, and bacteria product LPS. NF-kappaB is associated with IkappaB proteins in the cell cytoplasm, which inhibit NF-kappaB activity. The long-sought IkappaB kinase (IKK), which phosphorylates IkappaB, and mediates IkappaB degradation and NF-kappaB activation, was recently identified by several laboratories. IKK is a serine protein kinase, and the IKK complex contains alpha and beta subunits (IKKalpha and IKKbeta). IKKalpha and IKKbeta interact with each other and both are essential for the NF-kappaB activation. IKKalpha specifically phosphorylates Ikb-alpha. IKKalpha is expressed in variety of human tissues.

Overview

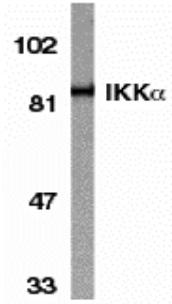
Product Name	Anti-IKK alpha CHUK Antibody
Reactive Species	Human
Description	Boster Bio Anti-IKK alpha CHUK Antibody (Catalog # A01918). Tested in ELISA, WB, ICC, IF applications. This antibody reacts with Human.
Application	ELISA, IF, ICC, WB
Clonality	Polyclonal
Formulation	IKK alpha Antibody is supplied in PBS containing 0.02% sodium azide.
Storage Instructions	IKK alpha antibody can be stored at 4°C for three months and -20°C, stable for up to one year. Avoid repeated freeze-thaw cycles. Antibodies should not be exposed to prolonged high temperatures.
Host	Rabbit
Uniprot ID	O15111

Technical Details

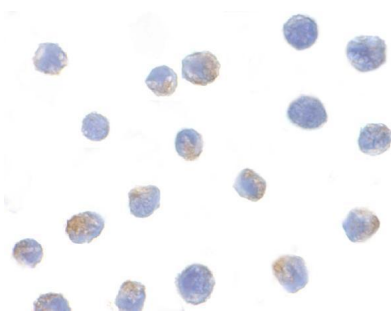
Immunogen	IKK alpha antibody was raised against a 19 amino acid peptide near the carboxy terminus of human IKK alpha. The immunogen is located within the last 50 amino acids of IKK alpha.
Predicted Reactive Species	Bovine, Mouse
Cross Reactivity	Antibody has no cross response to IKKb or IKKg.
Isotype	IgG
Form	Liquid
Concentration	1 mg/ml

Purification	IKK alpha Antibody is affinity chromatography purified via peptide column.
Suggested Dilutions	IKK alpha can be used for detection of IKK alpha by Western blot at 1 ug/mL. An 85 kDa band should be detected. Antibody can also be used for immunocytochemistry starting at 1 ug/mL. For immunofluorescence start at 20 ug/mL. Antibody validated: Western Blot in human samples; Immunocytochemistry in human samples and Immunofluorescence in human samples. All other applications and species not yet tested. Optimal dilutions for each application should be determined by the researcher.

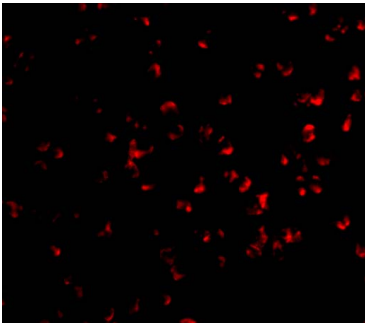
Anti-IKK alpha CHUK Antibody (A01918) Images



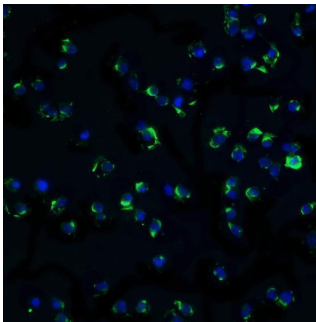
Western blot analysis of IKK alpha in HeLa whole cell lysate with IKK alpha antibody at 1:1000 dilution.



Immunocytochemistry of IKK alpha in Jurkat cells with IKK alpha antibody at 1ug/mL.

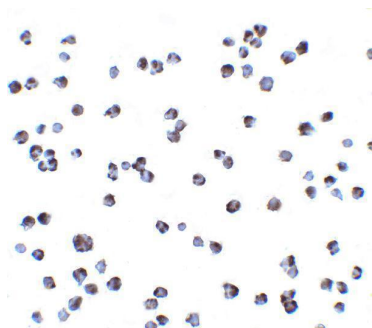


Immunofluorescence of IKK alpha in Jurkat cells with IKK alpha antibody at 10 ug/mL.



Immunofluorescence of IKK alpha in Jurkat cells with IKK alpha antibody at 20 ug/mL. Green: IKK alpha Antibody (A01918)
Blue: DAPI staining

Immunocytochemistry of IKK alpha in Jurkat cells with IKK alpha antibody at 2 ug/mL.



Submit a product review to [Biocompare.com](https://www.biocompare.com)

Submit a review of this product to [Biocompare.com](https://www.biocompare.com) to receive a \$20 Amazon.com giftcard! Your reviews help your fellow scientists make the right decisions. Thank you for your contribution.



Anti-IKK alpha CHUK Antibody

For Research Use Only. Not for use in diagnostic procedures.