

## Anti-IKK Alpha / Beta (phospho-S176/177) CHUK Antibody

Catalog Number: A01918S176

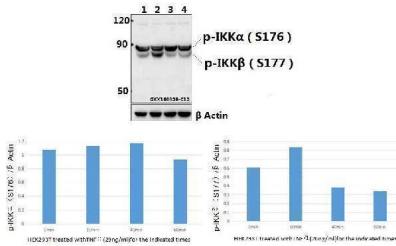
### Overview

Product Name	Anti-IKK Alpha / Beta (phospho-S176/177) CHUK Antibody
Reactive Species	Human, Mouse
Description	Boster Bio Anti-IKK Alpha / Beta (phospho-S176/177) CHUK Antibody catalog # A01918S176. Tested in WB,IHC applications. This antibody reacts with Human,Mouse.
Application	IHC, WB
Clonality	Polyclonal
Formulation	Rabbit IgG, 1mg/ml in PBS with 0.02% sodium azide, 50% glycerol, pH7.2
Storage Instructions	Store at -20°C for one year. For short term storage and frequent use, store at 4°C for up to one month. Avoid repeated freeze-thaw cycles.
Host	Rabbit
Uniprot ID	O15111/O14920

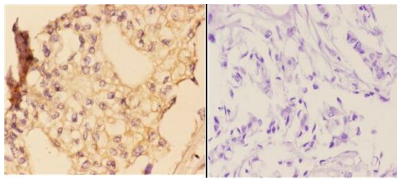
### Technical Details

Immunogen	Synthetic phosphopeptide derived from human IKKalpha/beta around the phosphorylation site of Serine 176/177.
Cross Reactivity	No cross reactivity with other proteins.
Isotype	IgG
Form	Liquid
Concentration	1 mg/ml
Purification	The antibody was affinity-purified from rabbit antiserum by affinity-chromatography using epitope-specific immunogen and the purity is > 95% (by SDS-PAGE).
Suggested Dilutions	WB: 1:500-1:1000 IHC: 1:50-1:200

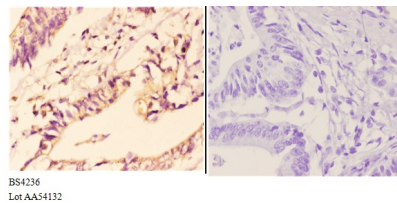
## Anti-IKK Alpha / Beta (phospho-S176/177) CHUK Antibody (A01918S176) Images



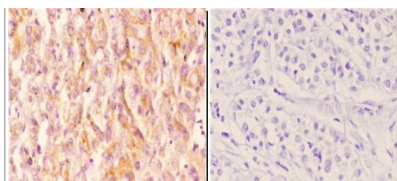
Western blot (WB) analysis of IKKalpha/beta (phospho-S176/177) polyclonal antibody at 1:500 dilution  
Lane1:HEK293T whole cell lysate Lane2:HEK293T treated with TNFalpha(20ng/ml)for 10 minutes whole cell lysate  
Lane3:HEK293T treated with TNFalpha(20ng/ml)for 40 minutes whole cell lysate Lane4:HEK293T treated with TNFalpha(20ng/ml)for 1 hour whole cell lysate



Immunohistochemistry (IHC) analyzes of p-IKKalpha/beta (S176/177) pAb in paraffin-embedded human breast carcinoma tissue at 1:50, showing cytoplasmic and nuclear staining. Negative control (the right) Using PBS instead of primary antibody, secondary antibody is Goat Anti-Rabbit IgG-biotin followed by avidin-peroxidase.



Immunohistochemistry (IHC) analyzes of p-IKKalpha/beta (S176/177) pAb in paraffin-embedded human colon carcinoma tissue at 1:50, showing cytoplasmic and nuclear staining. Negative control (the right) Using PBS instead of primary antibody, secondary antibody is Goat Anti-Rabbit IgG-biotin followed by avidin-peroxidase.



Immunohistochemistry (IHC) analyzes of p-IKKalpha/beta (S176/177) pAb in paraffin-embedded human liver carcinoma tissue at 1:50, showing cytoplasmic and nuclear staining. Negative control (the right) Using PBS instead of primary antibody, secondary antibody is Goat Anti-Rabbit IgG-biotin followed by avidin-peroxidase.

### Submit a product review to Biocompare.com

Submit a review of this product to Biocompare.com to receive a \$20 Amazon.com giftcard! Your reviews help your fellow scientists make the right decisions. Thank you for your contribution.



Anti-IKK Alpha / Beta (phospho-S176/177) CHUK Antibody

For Research Use Only. Not for use in diagnostic procedures.