

Anti-IKK Alpha / Beta (phospho-S180/181) CHUK Antibody

Catalog Number: A01918S180

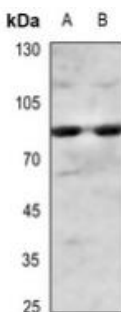
Overview

Product Name	Anti-IKK Alpha / Beta (phospho-S180/181) CHUK Antibody
Reactive Species	Human, Mouse, Rat
Description	Boster Bio Anti-IKK Alpha / Beta (phospho-S180/181) CHUK Antibody catalog # A01918S180. Tested in IHC applications. This antibody reacts with Human, Mouse, Rat.
Application	IHC
Clonality	Polyclonal
Formulation	Rabbit IgG, 1mg/ml in PBS with 0.02% sodium azide, 50% glycerol, pH7.2
Storage Instructions	Store at -20°C for one year. For short term storage and frequent use, store at 4°C for up to one month. Avoid repeated freeze-thaw cycles.
Host	Rabbit
Uniprot ID	O15111/O14920

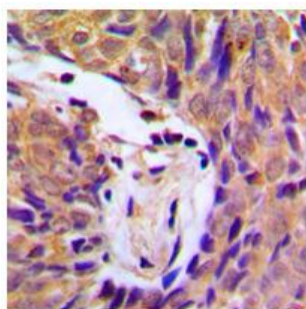
Technical Details

Immunogen	KLH-conjugated synthetic phosphopeptide corresponding to residues surrounding S180/181 of human IKK alpha/beta protein.
Cross Reactivity	No cross reactivity with other proteins.
Isotype	IgG
Form	Liquid
Concentration	1 mg/ml
Purification	The antibody was affinity-purified from rabbit antiserum by affinity-chromatography using epitope-specific immunogen and the purity is > 95% (by SDS-PAGE).
Suggested Dilutions	IHC: 1:50-1:200

Anti-IKK Alpha / Beta (phospho-S180/181) CHUK Antibody (A01918S180) Images



Western blot analysis of IKK alpha/beta (Phospho-S180/181) expression in mouse testis (A), rat testis (B) whole cell lysates.



Immunohistochemical analysis of IKK alpha/beta (Phospho-S180/181) staining in human breast cancer formalin fixed paraffin embedded tissue section.

Submit a product review to [Biocompare.com](https://www.biocompare.com)

Submit a review of this product to [Biocompare.com](https://www.biocompare.com) to receive a \$20 Amazon.com giftcard! Your reviews help your fellow scientists make the right decisions. Thank you for your contribution.



Anti-IKK Alpha / Beta (phospho-S180/181) CHUK Antibody

For Research Use Only. Not for use in diagnostic procedures.