

Anti-Cullin 5/CUL5 Antibody Picoband™

Catalog Number: A01925-1

About CUL5

Cullin-5 is a protein that in humans is encoded by the CUL5 gene. Cul5 inhibits cellular proliferation, potentially through its involvement in the SOCS/ BC-box/ eloBC/ cul5/ RING E3 ligase complex, which functions as part of the ubiquitin system for protein degradation. One study have shown that Cul5 plays a role in Reelin signaling cascade, participating in the DAB1 degradation and thus ensuring the negative feedback mechanism of Reelin signaling during corticogenesis.

Overview

Product Name	Anti-Cullin 5/CUL5 Antibody Picoband™
Reactive Species	Human, Mouse, Rat
Description	Boster Bio Anti-Cullin 5/CUL5 Antibody Picoband™ catalog # A01925-1. Tested in ELISA, WB applications. This antibody reacts with Human, Mouse, Rat.
Application	ELISA, WB
Clonality	Polyclonal
Formulation	Each vial contains 4mg Trehalose, 0.9mg NaCl, 0.2mg Na ₂ HPO ₄ , 0.05mg NaN ₃ .
Storage Instructions	Store at -20°C for one year from date of receipt. After reconstitution, at 4°C for one month. It can also be aliquotted and stored frozen at -20°C for six months. Avoid repeated freeze-thaw cycles.
Host	Rabbit
Uniprot ID	Q93034

Technical Details

Immunogen	E. coli-derived human Cullin 5 recombinant protein (Position: A2-D105).
Predicted Reactive Species	Human
Recommended Detection Systems	Boster recommends Enhanced Chemiluminescent Kit with anti-Rabbit IgG (EK1002) for Western blot.
Cross Reactivity	No cross-reactivity with other proteins.
Isotype	Rabbit IgG
Form	Lyophilized
Concentration	Adding 0.2 ml of distilled water will yield a concentration of 500 ug/ml.
Suggested Dilutions	Dilute the sample so that the expected range of concentrations fall within the detection range of this

kit.

If the expected range of concentration is unknown, a pilot test should be conducted to decide the optimal dilution ratio for your samples.

Some PubMed article(s) citing the expression level of this target are as follows:

Boster Bio's internal QC testing used:

Western blot, 0.1-0.5ug/ml

Direct ELISA, 0.1-0.5ug/ml

Anti-Cullin 5/CUL5 Antibody Picoband™ (A01925-1) Images

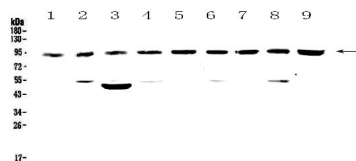


Figure 1. Western blot analysis of Cullin 5 using anti-Cullin 5 antibody (A01925-1).

Electrophoresis was performed on a 5-20% SDS-PAGE gel at 70V (Stacking gel) / 90V (Resolving gel) for 2-3 hours. The sample well of each lane was loaded with 50ug of sample under reducing conditions.

Lane 1: rat brain tissue lysates,
Lane 2: rat spleen tissue lysates,
Lane 3: rat heart tissue lysates,
Lane 4: rat kidney tissue lysates,
Lane 5: mouse brain tissue lysates,
Lane 6: mouse spleen tissue lysates,
Lane 7: mouse heart tissue lysates,
Lane 8: mouse kidney tissue lysates,
Lane 9: mouse testis tissue lysates.

After Electrophoresis, proteins were transferred to a Nitrocellulose membrane at 150mA for 50-90 minutes. Blocked the membrane with 5% Non-fat Milk/ TBS for 1.5 hour at RT. The membrane was incubated with rabbit anti-Cullin 5 antigen affinity purified polyclonal antibody (Catalog # A01925-1) at 0.5 ug/mL overnight at 4°C, then washed with TBS-0.1%Tween 3 times with 5 minutes each and probed with a goat anti-rabbit IgG-HRP secondary antibody at a dilution of 1:10000 for 1.5 hour at RT. The signal is developed using an Enhanced Chemiluminescent detection (ECL) kit (Catalog # EK1002) with Tanon 5200 system. A specific band was detected for Cullin 5 at approximately 91KD. The expected band size for Cullin 5 is at 91KD.

Submit a product review to Biocompare.com

Submit a review of this product to Biocompare.com to receive a \$20 Amazon.com giftcard! Your reviews help your fellow scientists make the right decisions. Thank you for your contribution.



Anti-Cullin 5/CUL5 Antibody™