

## Anti-SRSF protein kinase 1 SRPK1 Antibody

Catalog Number: A01937-1

### Introduction

CD3epsilon is a 20kD chain, which together with CD3lambda, CD3delta, and CD3zeta, and a T cell receptor (alpha/beta or gamma/delta) form the CD3/T-cell receptor complex. It is a specific marker for T lymphocytes, NK T cells, and some thymocytes. Crosslinking of TCR initiates an intracellular signaling cascade resulting in cellular activation and proliferation. The OKT3 antibody has been reported to have potent immunosuppressive properties in vivo and has been proved effective in the treatment of renal, heart, and liver allograft rejection.

This antibody is routinely tested by flow cytometric analysis. Flow cytometry and other applications were tested during antibody development or are reported in the literature.

### Application Information

Each lot of this antibody has been quality control tested by flow cytometric analysis of human PBMCs. For flow cytometric staining, the recommended use of this antibody is  $\leq 0.5\mu\text{g}$  per  $1 \times 10^6$  cells in  $100\mu\text{l}$  of staining volume followed by a secondary fluorescent conjugated anti-mouse antibody. However, it is strongly suggested that the antibody reactivity be empirically titrated for optimal performance in the application of interest.

### About SRPK1

SRPK1 and SRPK2, two Arginine/serine-rich (SR) protein-specific kinases constitute control circuits to regulate both constitutive and alternative pre-mRNA splicing and coordinate splicing with transcription in cells (1). They are highly specific for the phosphorylation of these RS proteins, and highly expressed in testis (1,2). SRPK1 plays a role in the condensation of sperm chromatin and controls the intranuclear distribution of splicing factors in interphase cells and the reorganization of nuclear speckles during mitosis (3,4).

### Overview

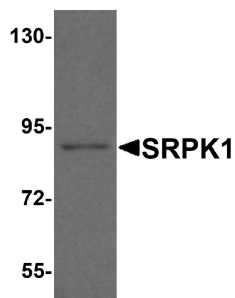
Product Name	Anti-SRSF protein kinase 1 SRPK1 Antibody
Reactive Species	Human, Mouse, Rat
Description	Boster Bio Anti-SRSF protein kinase 1 SRPK1 Antibody (Catalog # A01937-1). Tested in ELISA, WB, IHC-P applications. This antibody reacts with Human, Mouse, Rat.
Conjugate	Biotin
Application	ELISA, IHC-P, WB
Clonality	Polyclonal SK7
Formulation	SRPK1 Antibody is supplied in PBS containing 0.02% sodium azide.
Storage Instructions	SRPK1 antibody can be stored at 4°C for three months and -20°C, stable for up to one year.
Host	Rabbit

Uniprot ID	Q96SB4
------------	--------

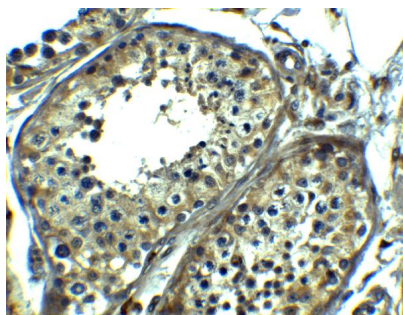
## Technical Details

Immunogen	SRPK1 antibody was raised against a 19 amino acid peptide from near the amino terminus of human SRPK1. The immunogen is located within the first 50 amino acids of SRPK1.
Predicted Reactive Species	Bovine
Cross Reactivity	SRPK1 antibody is human, mouse and rat reactive. Multiple isoforms of SRPK1 are known to exist; this antibody will detect all except isoforms b and e. SRPK1 antibody is predicted to not cross-react with SRPK2.
Isotype	IgG
Form	Liquid
Concentration	1 mg/mL
Purification	SRPK1 Antibody is affinity chromatography purified via peptide column.
Suggested Dilutions	<p>Dilute the sample so that the expected range of concentrations fall within the detection range of this kit.</p> <p>If the expected range of concentration is unknown, a pilot test should be conducted to decide the optimal dilution ratio for your samples.</p> <p>Some PubMed article(s) citing the expression level of this target are as follows:</p> <p>Boster Bio's internal QC testing used:</p> <p>SRPK1 antibody can be used for the detection of SRPK1 by Western blot at 1 - 2 ug/mL. Antibody can also be used for immunohistochemistry at 5 ug/ml.</p> <p>Antibody validated: Western Blot in mouse samples and Immunohistochemistry in human samples. All other applications and species not yet tested. Optimal dilutions for each application should be determined by the researcher.</p>

## Anti-SRSF protein kinase 1 SRPK1 Antibody (A01937-1) Images



Western blot analysis of SRPK1 in mouse heart tissue lysate with SRPK1 antibody at 1 ug/ml.



Immunohistochemistry of SRPK1 in human testis tissue with SRPK1 antibody at 5 ug/ml.

### Submit a product review to Biocompare.com

Submit a review of this product to Biocompare.com to receive a \$20 Amazon.com giftcard! Your reviews help your fellow scientists make the right decisions. Thank you for your contribution.



Anti-SRSF protein kinase 1 SRPK1 Antibody