

## Anti-Nipped-B-like protein NIPBL Antibody

Catalog Number: A01939

### Overview

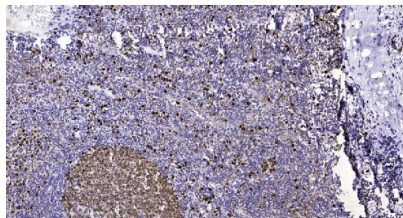
Product Name	Anti-Nipped-B-like protein NIPBL Antibody
Reactive Species	Human, Mouse
Description	Boster Bio Anti-Nipped-B-like protein NIPBL Antibody catalog # A01939. Tested in IHC, IF applications. This antibody reacts with Human, Mouse.
Application	IF, IHC
Clonality	Polyclonal
Formulation	Liquid form in PBS containing 50% glycerol, and 0.02% sodium azide.
Storage Instructions	Store at -20°C for one year. For short term storage and frequent use, store at 4°C for up to one month. Avoid repeated freeze-thaw cycles.
Host	Rabbit
Uniprot ID	Q6KC79

### Technical Details

Immunogen	Synthesized peptide derived from human protein at AA range: 560-640
Isotype	IgG
Form	Liquid
Concentration	1 mg/ml
Purification	NIPBL antibody was affinity-purified from rabbit antiserum by affinity-chromatography using epitope-specific immunogen.
Suggested Dilutions	IHC 1:50-300 IF 1:50-200

## Anti-Nipped-B-like protein NIPBL Antibody (A01939) Images

---



Immunohistochemical analysis of paraffin-embedded human tonsil. 1, Antibody was diluted at 1:200 (4° overnight). 2, Tris-EDTA, pH9.0 was used for antigen retrieval. 3, Secondary antibody was diluted at 1:200 (room temperature, 45min).

### Submit a product review to Biocompare.com

---

Submit a review of this product to Biocompare.com to receive a \$20 Amazon.com giftcard! Your reviews help your fellow scientists make the right decisions. Thank you for your contribution.



Anti-Nipped-B-like protein NIPBL Antibody

For Research Use Only. Not for use in diagnostic procedures.