

## Anti-DNA pol beta Antibody

Catalog Number: A01946-1

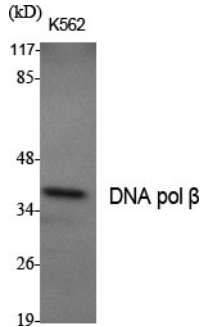
### Overview

Product Name	Anti-DNA pol beta Antibody
Reactive Species	Human, Mouse, Rat
Description	Boster Bio Anti-DNA pol beta Antibody catalog # A01946-1. Tested in WB, IHC, IF, ELISA applications. This antibody reacts with Human, Mouse, Rat.
Application	ELISA, IF, IHC, WB
Clonality	Polyclonal
Formulation	Liquid in PBS containing 50% glycerol, 0.5% stabilizing protein and 0.02% sodium azide. *This antibody is supplied in a stabilized formulation. Compatibility with conjugation reactions depends on the chemistry of the conjugation method used. For conjugation methods that are not compatible with the stabilizing components present in this formulation, a carrier-free antibody format is required.
Storage Instructions	Store at -20°C for one year. For short term storage and frequent use, store at 4°C for up to one month. Avoid repeated freeze-thaw cycles.
Host	Rabbit
Uniprot ID	P06746

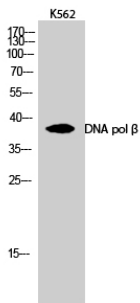
### Technical Details

Immunogen	The antiserum was produced against synthesized peptide derived from human DNA Polymerase beta. AA range:286-335
Cross Reactivity	No cross reactivity with other proteins.
Isotype	IgG
Form	Liquid
Concentration	1 mg/ml
Purification	Immunogen affinity purified
Suggested Dilutions	WB 1:500-1:2000 IHC 1:100-1:300 ELISA 1:10000 IF 1:50-200

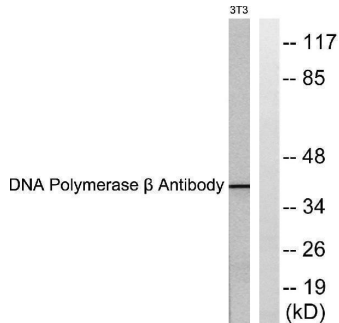
## Anti-DNA pol beta Antibody (A01946-1) Images



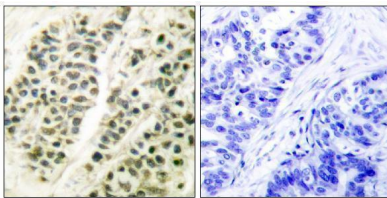
Western Blot analysis of various cells using DNA pol beta Polyclonal Antibody



Western Blot analysis of K562 cells using DNA pol beta Polyclonal Antibody



Western blot analysis of lysates from NIH/3T3 cells, using DNA Polymerase beta Antibody. The lane on the right is blocked with the synthesized peptide.



Immunohistochemistry analysis of paraffin-embedded human breast carcinoma tissue, using DNA Polymerase beta Antibody. The picture on the right is blocked with the synthesized peptide.

### Submit a product review to [Biocompare.com](https://www.biocompare.com)

Submit a review of this product to [Biocompare.com](https://www.biocompare.com) to receive a \$20 Amazon.com giftcard! Your reviews help your fellow scientists make the right decisions. Thank you for your contribution.



Anti-DNA pol beta Antibody

For Research Use Only. Not for use in diagnostic procedures.