

## Anti-DNA Polymerase Beta POLB Antibody

Catalog Number: A01946-2

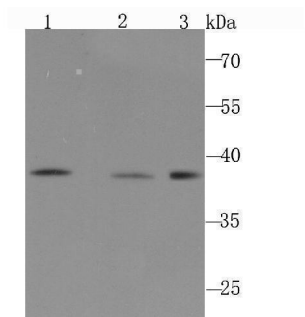
### Overview

Product Name	Anti-DNA Polymerase Beta POLB Antibody
Reactive Species	Human, Mouse, Rat, Zebrafish
Description	Boster Bio Anti-DNA Polymerase Beta POLB Antibody catalog # A01946-2. Tested in WB,IHC,IP,ICC applications. This antibody reacts with Human,Mouse,Rat,Zebrafish.
Application	IP, IHC, ICC, WB
Clonality	Polyclonal
Formulation	Rabbit IgG, 1mg/ml in PBS with 0.02% sodium azide, 50% glycerol, pH7.2
Storage Instructions	Store at -20°C for one year. For short term storage and frequent use, store at 4°C for up to one month. Avoid repeated freeze-thaw cycles.
Host	Rabbit
Uniprot ID	P06746

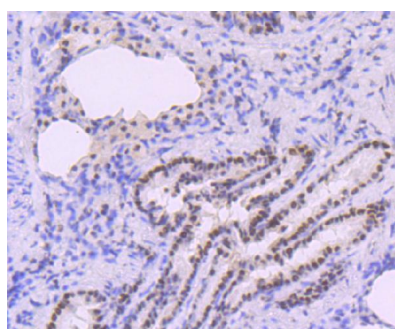
### Technical Details

Immunogen	Recombinant protein
Isotype	IgG
Form	Liquid
Concentration	1 mg/ml
Purification	ProA affinity purified
Suggested Dilutions	WB: 1:500 IHC: 1:50-1:200 ICC: 1:20-1:50 IP: 1:10-1:20

## Anti-DNA Polymerase Beta POLB Antibody (A01946-2) Images



Western blot analysis of DNA Polymerase beta on different cell lysate using anti-DNA Polymerase beta antibody at 1/1,000 dilution. Positive control □ Lane1: PC-12 Lane2: NIH-3T3 Lane3: A431



Immunohistochemical analysis of paraffin-embedded rat lung tissue using anti-DNA Polymerase beta antibody. Counter stained with hematoxylin.

### Submit a product review to [Biocompare.com](https://www.biocompare.com)

Submit a review of this product to [Biocompare.com](https://www.biocompare.com) to receive a \$20 Amazon.com giftcard! Your reviews help your fellow scientists make the right decisions. Thank you for your contribution.



Anti-DNA Polymerase Beta POLB Antibody

For Research Use Only. Not for use in diagnostic procedures.