

Anti-LEDGF PSIP1 Monoclonal Antibody

Catalog Number: A01960

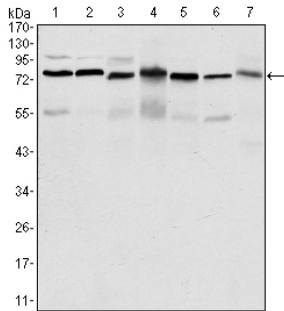
Overview

Product Name	Anti-LEDGF PSIP1 Monoclonal Antibody
Reactive Species	Human, Monkey, Rat
Description	Boster Bio Anti-LEDGF PSIP1 Monoclonal Antibody catalog # A01960. Tested in WB, IHC, IF, ELISA applications. This antibody reacts with Human, Rat, Monkey.
Application	ELISA, IF, IHC, WB
Clonality	Monoclonal 11168
Formulation	Ascitic fluid containing 0.03% sodium azide.
Storage Instructions	Store at -20°C for one year. For short term storage and frequent use, store at 4°C for up to one month. Avoid repeated freeze-thaw cycles.
Host	Mouse
Uniprot ID	O75475

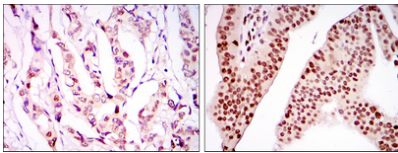
Technical Details

Immunogen	Purified recombinant fragment of human LEDGF expressed in E. Coli.
Cross Reactivity	No cross reactivity with other proteins.
Isotype	IgG
Form	Liquid
Concentration	1 mg/ml
Purification	Ascitic fluid
Suggested Dilutions	WB 1:500-1:2000 IHC 1:200-1:1000 IF 1:200-1:1000 ELISA 1:10000

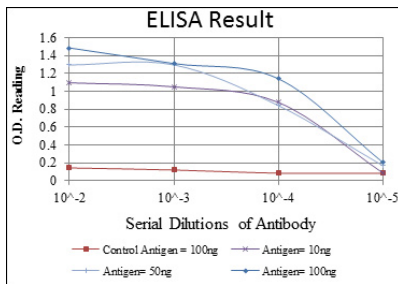
Anti-LEDGF PSIP1 Monoclonal Antibody (A01960) Images



Immunohistochemistry analysis of paraffin-embedded breast cancer tissues (left) and ovarian cancer tissues (right) with DAB staining using LEDGF Monoclonal Antibody.



Immunofluorescence analysis of NIH/3T3 cells using LEDGF Monoclonal Antibody (green). Red: Actin filaments have been labeled with Alexa Fluor-555 phalloidin.



Western Blot analysis using LEDGF Monoclonal Antibody against HepG2 (1), Jurkat (2), K562 (3), Cos7 (4), PC-12 (5), HeLa (6), and NIH/3T3 (7) cell lysate.

Submit a product review to Biocompare.com

Submit a review of this product to Biocompare.com to receive a \$20 Amazon.com giftcard! Your reviews help your fellow scientists make the right decisions. Thank you for your contribution.



Anti-LEDGF PSIP1 Monoclonal Antibody

For Research Use Only. Not for use in diagnostic procedures.