

## Anti-Lin28 Antibody

Catalog Number: A01966

### About LIN28A

Lin28 is a transcription factor that was first identified through its key role in the pathway of developmental timing in *C. elegans*. The role of Lin28 in development suggested that it might be useful in the creation of stem cells that might be beneficial in cell replacement therapies in the treatment of several degenerative diseases. Artificial stem cells, termed induced pluripotent stem (iPS) cells, can be created by expressing Lin28 in addition to the transcription factors POU5F1, Sox2, and NANOG in mouse fibroblasts. More recently, experiments have demonstrated that iPS cells could be generated using expression plasmids expressing Lin28, Sox2, POU5F1 and c-Myc, eliminating the need for virus introduction, thereby addressing a safety concern for potential use of iPS cells in regenerative medicine.

### Overview

Product Name	Anti-Lin28 Antibody
Reactive Species	Human
Description	Boster Bio Anti-Lin28 Antibody (Catalog # A01966). Tested in ELISA, WB, IHC-P, IF applications. This antibody reacts with Human.
Application	ELISA, IF, IHC-P, WB
Clonality	Polyclonal
Formulation	Lin28 Antibody is supplied in PBS containing 0.02% sodium azide.
Storage Instructions	Lin28 antibody can be stored at 4°C up to one year. Antibodies should not be exposed to prolonged high temperatures.
Host	Rabbit
Uniprot ID	Q9H9Z2

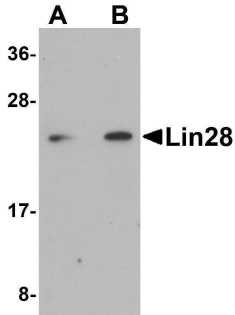
### Technical Details

Immunogen	Lin28 antibody was raised against a 15 amino acid synthetic peptide near the carboxy terminus of human Lin28. The immunogen is located within the last 50 amino acids of Lin28.
Predicted Reactive Species	Chicken, Mouse
Isotype	IgG
Form	Liquid
Concentration	1 mg/mL
Purification	Lin28 Antibody is affinity chromatography purified via peptide column.

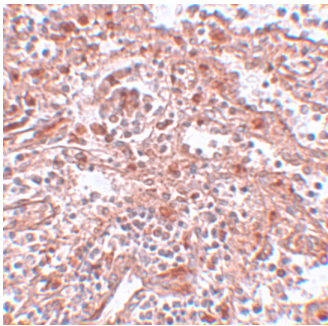
**Suggested Dilutions**

Lin28 antibody can be used for detection of Lin28 by Western blot at 1 - 2 ug/mL. Antibody can also be used for immunohistochemistry starting at 5 ug/mL. For immunofluorescence start at 20 ug/mL. Antibody validated: Western Blot in human samples; Immunohistochemistry in human samples and Immunofluorescence in human samples. All other applications and species not yet tested. Optimal dilutions for each application should be determined by the researcher.

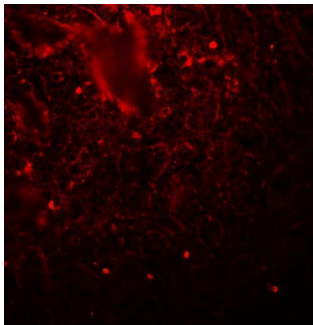
## Anti-Lin28 Antibody (A01966) Images



Western blot analysis of Lin28 in Raji cell lysate with Lin28 antibody at (A) 1 and (B) 2 ug/mL.



Immunohistochemistry of KLF4 in human spleen tissue with KLF4 antibody at 5 ug/mL.



Immunofluorescence of LIN28 in human spleen tissue with LIN28 antibody at 20 ug/mL.

### Submit a product review to [Biocompare.com](https://www.biocompare.com)

Submit a review of this product to [Biocompare.com](https://www.biocompare.com) to receive a \$20 Amazon.com giftcard! Your reviews help your fellow scientists make the right decisions. Thank you for your contribution.



Anti-Lin28 Antibody

For Research Use Only. Not for use in diagnostic procedures.