

## Anti-Beta-2-glycoprotein 1 APOH Antibody

Catalog Number: A01998

### About APOH

The protein encoded by Gab1 is a member of the IRS1-like multisubstrate docking protein family. It is an important mediator of branching tubulogenesis and plays a central role in cellular growth response, transformation and apoptosis. Two transcript variants encoding different isoforms have been found for this gene.

Anders Kallin, et al. (2004) J. Biol. Chem ; 279: 17897 - 17904.

Hideto Kameda, et al. (2001) Cell Growth Differ ; 12: 307.

Masaki Osawa, et al. (2002) J. Cell Biol ; 158: 773.

### Overview

Product Name	Anti-Beta-2-glycoprotein 1 APOH Antibody
Reactive Species	Human
Description	Boster Bio Anti-Beta-2-glycoprotein 1 APOH Antibody catalog # A01998. Tested in WB,ICC/IF applications. This antibody reacts with Human.
Application	IF, ICC, WB
Clonality	Polyclonal
Formulation	Rabbit IgG, 1mg/ml in PBS with 0.02% sodium azide, 50% glycerol, pH7.2
Storage Instructions	Store at -20°C for one year. For short term storage and frequent use, store at 4°C for up to one month. Avoid repeated freeze-thaw cycles.
Host	Rabbit
Uniprot ID	P02749

### Technical Details

Immunogen	Recombinant protein of human BRIP1.
Predicted Reactive Species	Boar, Bovine, Canine, Golden Hamster
Isotype	IgG
Form	Liquid
Concentration	1 mg/ml
Purification	The antibody was affinity-purified from rabbit antiserum by affinity-chromatography using epitope-specific immunogen and the purity is > 95% (by SDS-PAGE).

**Suggested Dilutions**

Dilute the sample so that the expected range of concentrations fall within the detection range of this kit.

If the expected range of concentration is unknown, a pilot test should be conducted to decide the optimal dilution ratio for your samples.

Some PubMed article(s) citing the expression level of this target are as follows:

Boster Bio's internal QC testing used:

WB: 1:500-1:2000

ICC/IF: 1:50-1:200

## Anti-Beta-2-glycoprotein 1 APOH Antibody (A01998) Images

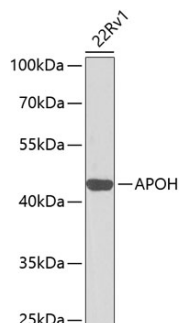


Figure 1. Western blotting validation for Anti-Beta-2-glycoprotein 1 APOH Antibody A01998

WesternBlot (WB) analysis of APOH polyclonal antibody in extracts from mouse testis tissue. Electrophoresis was performed on a SDS-PAGE gel. To determine SDS-PAGE gel concentration

### Submit a product review to Biocompare.com

Submit a review of this product to Biocompare.com to receive a \$20 Amazon.com giftcard! Your reviews help your fellow scientists make the right decisions. Thank you for your contribution.



Anti-Beta-2-glycoprotein 1 APOH Antibody