

Anti-ACAT1 (K266) Antibody

Catalog Number: A02008

About ACAT1

The protein encoded by Gab1 is a member of the IRS1-like multisubstrate docking protein family. It is an important mediator of branching tubulogenesis and plays a central role in cellular growth response, transformation and apoptosis. Two transcript variants encoding different isoforms have been found for this gene.

Anders Kallin, et al. (2004) J. Biol. Chem ; 279: 17897 - 17904.

Hideto Kameda, et al. (2001) Cell Growth Differ ; 12: 307.

Masaki Osawa, et al. (2002) J. Cell Biol ; 158: 773.

Overview

Product Name	Anti-ACAT1 (K266) Antibody
Reactive Species	Human, Mouse, Rat
Description	Boster Bio Anti-ACAT1 (K266) Antibody catalog # A02008. Tested in WB,IHC applications. This antibody reacts with Human,Mouse,Rat.
Application	IHC, WB
Clonality	Polyclonal
Formulation	Rabbit IgG, 1mg/ml in PBS with 0.02% sodium azide, 50% glycerol, pH7.2
Storage Instructions	Store at -20°C for one year. For short term storage and frequent use, store at 4°C for up to one month. Avoid repeated freeze-thaw cycles.
Host	Rabbit
Uniprot ID	P24752

Technical Details

Immunogen	Synthetic peptide, corresponding to amino acids 235-286 of Human ACAT1.
Predicted Reactive Species	Boar, Bovine, Canine, Golden Hamster
Isotype	IgG
Form	Liquid
Concentration	1 mg/ml
Purification	The antibody was affinity-purified from rabbit antiserum by affinity-chromatography using epitope-specific immunogen and the purity is > 95% (by SDS-PAGE).

Suggested Dilutions

Dilute the sample so that the expected range of concentrations fall within the detection range of this kit.

If the expected range of concentration is unknown, a pilot test should be conducted to decide the optimal dilution ratio for your samples.

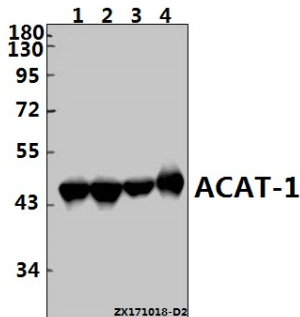
Some PubMed article(s) citing the expression level of this target are as follows:

Boster Bio's internal QC testing used:

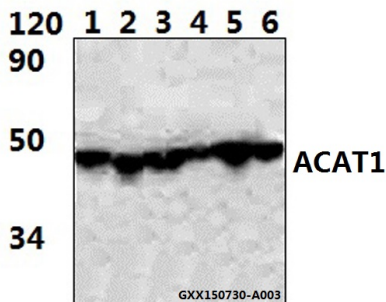
WB: 1:500-1:1000

IHC: 1:50-1:200

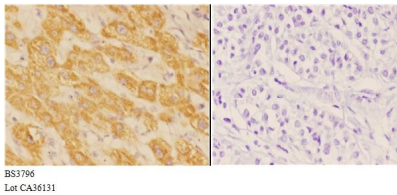
Anti-ACAT1 (K266) Antibody (A02008) Images



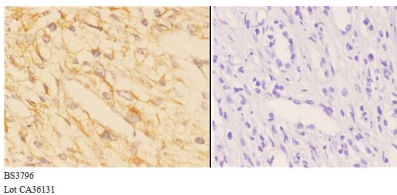
Western blot (WB) analysis of ACAT-1 (K266) pAb at 1:1000 dilution
Lane1:HEK293T whole cell lysate(20ug)
Lane2:HepG2 whole cell lysate(20ug)
Lane3:The Lung tissue lysate of Rat(20ug)
Lane4:The Lung tissue lysate of Mouse(10ug)



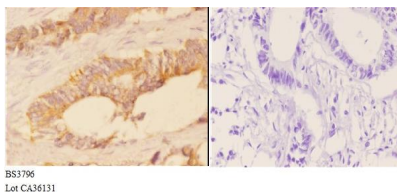
Western blot (WB) analysis of ACAT1 (K266) pAb at 1:500 dilution
Lane1:Hela whole cell lysate(40ug)
Lane2:HEK293T whole cell lysate(40ug)
Lane3:SP2/0 whole cell lysate(40ug)
Lane4:H9C2 whole cell lysate(40ug)
Lane5:PC12 whole cell lysate(40ug)
Lane6:NIH-3 whole cell lysate(40ug)



Immunohistochemistry (IHC) analyzes of ACAT1 (K266) pAb in paraffin-embedded human liver carcinoma tissue at 1:50, showing cytoplasmic staining. Negative control (the right) Using PBS instead of primary antibody, secondary antibody is Goat Anti-Rabbit IgG-biotin followed by avidin-peroxidase.



Immunohistochemistry (IHC) analyzes of ACAT1 (K266) pAb in paraffin-embedded human kidney carcinoma tissue at 1:50, showing cytoplasmic staining. Negative control (the right) Using PBS instead of primary antibody, secondary antibody is Goat Anti-Rabbit IgG-biotin followed by avidin-peroxidase.



Immunohistochemistry (IHC) analyzes of ACAT1 (K266) pAb in paraffin-embedded human rectum carcinoma tissue at 1:50, showing cytoplasmic staining. Negative control (the right) Using PBS instead of primary antibody, secondary antibody is Goat Anti-Rabbit IgG-b

Submit a product review to Biocompare.com

Submit a review of this product to Biocompare.com to receive a \$20 Amazon.com giftcard! Your reviews help your fellow scientists make the right decisions. Thank you for your contribution.



Anti-ACAT1 (K266) Antibody