

Anti-MKK6 (Ab-207) MAP2K6 Antibody

Catalog Number: A02011-2

About MAP2K6

MEK6 is a member of MAPKK protein kinase family. By using degenerate oligonucleotide primers from the conserved kinase domains of MKK3 and MKK4 two human cDNAs and 1 murine cDNA encoding closely related proteins of the MKK family were cloned. The two human clones appear to be different isoforms of the same gene generated by differential splicing: the shorter clone was designated MKK6, encodes a 278-amino acid protein, while the longer clone, designated MKK6b, encodes a 334-amino acid protein. MKK6 is about 80% identical to MKK3 and 40% identical to MKK4. 1.7-kb human MKK6 transcript is highly expressed in skeletal muscle, while an MKK6b-specific probe detected mRNA bands of 1.8, 2.4, and 4.5 kb that are enriched in heart, skeletal muscle, pancreas and liver. MKK6 plays an important role in intracellular signaling pathways leading toward activation of the p38 MAP kinase. MEK6 phosphorylates and activates p38 in response to inflammatory cytokines or environmental stress. As an essential component of p38 MAPK mediated signal transduction pathway, this gene is involved in many cellular processes such as stress induced cell cycle arrest, transcription activation and apoptosis.

Wang W, et al. (2002) Mol Cell Biol ; 22(10): 3389-403.

Raingeaud J, et al. (1996) Mol Cell Biol; 16(3): 1247-55.

Overview

Product Name	Anti-MKK6 (Ab-207) MAP2K6 Antibody
Reactive Species	Human, Mouse, Rat
Description	Boster Bio Anti-MKK6 (Ab-207) MAP2K6 Antibody (Catalog # A02011-2). Tested in WB, IHC, IF applications. This antibody reacts with Human, Mouse, Rat.
Application	IF, IHC, WB
Clonality	Polyclonal
Formulation	Supplied at 1.0mg/mL in phosphate buffered saline (without Mg ²⁺ and Ca ²⁺), pH 7.4, 150mM NaCl, 0.02% sodium azide and 50% glycerol.
Storage Instructions	Store at -20°C for one year. For short term storage and frequent use, store at 4°C for up to one month. Avoid repeated freeze-thaw cycles.
Host	Rabbit
Uniprot ID	P52564

Technical Details

Immunogen	Peptide sequence around aa.205~209 (V-D-S-V-A) derived from Human MKK6.
Predicted Reactive Species	Bovine, Canine, Equine, Goat, Guinea Pig, Rabbit, Sheep, Zebrafish
Isotype	IgG

Form	Liquid
Concentration	1 mg/ml
Purification	Antibodies were produced by immunizing rabbits with synthetic peptide and KLH conjugates. Antibodies were purified by affinity-chromatography using epitope-specific peptide.
Suggested Dilutions	<p>Dilute the sample so that the expected range of concentrations fall within the detection range of this kit.</p> <p>If the expected range of concentration is unknown, a pilot test should be conducted to decide the optimal dilution ratio for your samples.</p> <p>Some PubMed article(s) citing the expression level of this target are as follows:</p> <p>Boster Bio's internal QC testing used:</p> <p>Predicted MW: 41kd</p> <p>Western blotting: 1:500~1:1000</p> <p>Immunohistochemistry: 1:50~1:100</p> <p>Immunofluorescence: 1:100~1:200</p>

Anti-MKK6 (Ab-207) MAP2K6 Antibody (A02011-2) Images

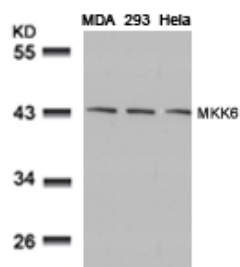
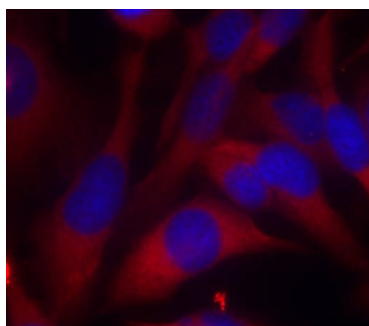


Figure 1. Western blot analysis of MAP2K6 using anti-MAP2K6 antibody (A02011-2). Electrophoresis was performed on a 5-20% SDS-PAGE gel at 70V (Stacking gel) / 90V (Resolving gel) for 2-3 hours. The sample well of each lane was loaded with 50ug of sample under reducing conditions. After Electrophoresis, proteins were transferred to a Nitrocellulose membrane at 150mA for 50-90 minutes. Blocked the membrane with 5% Non-fat Milk/ TBS for 1.5 hour at RT. The membrane was incubated with rabbit anti-MAP2K6 antigen affinity purified polyclonal antibody (Catalog # A02011-2) at 0.5 ug/mL overnight at 4°C, then washed with TBS-0.1%Tween 3 times with 5 minutes each and probed with a goat anti-Rabbit IgG-HRP secondary antibody at a dilution of 1:10000 for 1.5 hour at RT. The signal is developed using an Enhanced Chemiluminescent detection (ECL) kit (Catalog # SA1022) with Tanon 5200 system. A specific band was detected for MAP2K6.



Immunofluorescence staining of methanol-fixed HeLa cells using MKK6(Ab-207) Antibody #A02011-2.

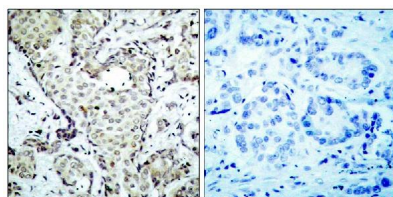


Figure 2. IHC analysis of MAP2K6 using anti-MAP2K6 antibody (A02011-2). MAP2K6 was detected in paraffin-embedded section. Heat mediated antigen retrieval was performed in citrate buffer (pH6, epitope retrieval solution) for 20 mins. The tissue section was blocked with 10% goat serum. The tissue section was then incubated with 1ug/ml rabbit anti-MAP2K6 Antibody (A02011-2) overnight at 4°C. Biotinylated goat anti Rabbit IgG antibody was used as secondary antibody and incubated for 30 minutes at 37°C. The tissue section was developed using Streptavidin-Biotin-Complex (SABC)(Catalog # SA1022) with DAB as the chromogen.

Submit a product review to Biocompare.com

Submit a review of this product to Biocompare.com to receive a \$20 Amazon.com giftcard! Your reviews help your fellow scientists make the right decisions. Thank you for your contribution.

