

Anti-Na⁺ CP type VIII Alpha SCN8A Antibody

Catalog Number: A02015

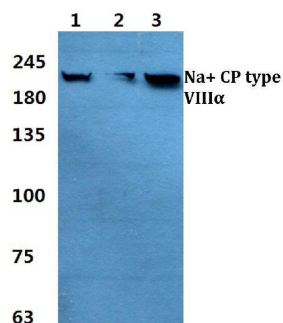
Overview

| | |
|----------------------|---|
| Product Name | Anti-Na ⁺ CP type VIII Alpha SCN8A Antibody |
| Reactive Species | Human, Mouse, Rat |
| Description | Boster Bio Anti-Na ⁺ CP type VIII Alpha SCN8A Antibody catalog # A02015. Tested in WB applications. This antibody reacts with Human, Mouse, Rat. |
| Application | WB |
| Clonality | Polyclonal |
| Formulation | Rabbit IgG, 1mg/ml in PBS with 0.02% sodium azide, 50% glycerol, pH7.2 |
| Storage Instructions | Store at -20°C for one year. For short term storage and frequent use, store at 4°C for up to one month. Avoid repeated freeze-thaw cycles. |
| Host | Rabbit |
| Uniprot ID | Q9UQD0 |

Technical Details

| | |
|---------------------|---|
| Immunogen | A synthetic peptide corresponding to residues in Human Na ⁺ CP type VIII alpha. |
| Isotype | IgG |
| Form | Liquid |
| Concentration | 1 mg/ml |
| Purification | The antibody was affinity-purified from rabbit antiserum by affinity-chromatography using epitope-specific immunogen and the purity is > 95% (by SDS-PAGE). |
| Suggested Dilutions | WB: 1:500-1:1000 |

Anti-Na+ CP type VIII Alpha SCN8A Antibody (A02015) Images



Western blot (WB) analysis of Na+ CP type VIII alpha polyclonal antibody at 1:500 dilution. Lane 1: MCF-7 cell lysate, Lane 2: Raw264.7 cell lysate, Lane 3: H9C2 cell lysate.

Submit a product review to Biocompare.com

Submit a review of this product to Biocompare.com to receive a \$20 Amazon.com giftcard! Your reviews help your fellow scientists make the right decisions. Thank you for your contribution.



Anti-Na+ CP type VIII Alpha SCN8A Antibody

For Research Use Only. Not for use in diagnostic procedures.