

## Anti-TP1 TEP1 Antibody

Catalog Number: A02017

### About TEP1

Telomerase is an RNA-dependent DNA polymerase that uses an RNA component to add telomeric repeat sequences at the ends of chromosomes. Besides the RNA component which serves as the template that specifies the telomeric repeat, the telomerase complex contains a reverse transcriptase protein (TRT) and various accessory proteins including the telomerase-associated protein 1 (TP1). Telomerase activity is low in most somatic cells, causing the gradual shortening of telomeres which can ultimately lead to telomere fusion and cell death. High levels of telomerase activity are widely seen in cancerous cells and while recent experiments have suggested that telomerase may be a viable target in cancer therapy, expression levels of TP1 do not correlate with malignancy. At least two isoforms of TP1 are known to exist.

### Overview

|                      |  |
|----------------------|--|
| Product Name         | Anti-TP1 TEP1 Antibody   |
| Reactive Species     | Human, Mouse, Rat  |
| Description          | Boster Bio Anti-TP1 TEP1 Antibody (Catalog # A02017). Tested in ELISA, WB, IHC-P, IF applications. This antibody reacts with Human, Mouse, Rat.  |
| Application          | ELISA, IF, IHC-P, WB   |
| Clonality            | Polyclonal   |
| Formulation          | TP1 Antibody is supplied in PBS containing 0.02% sodium azide.   |
| Storage Instructions | TP1 antibody can be stored at 4°C for three months and -20°C, stable for up to one year. Avoid repeated freeze-thaw cycles. Antibodies should not be exposed to prolonged high temperatures. |
| Host                 | Rabbit   |
| Uniprot ID           | Q99973   |

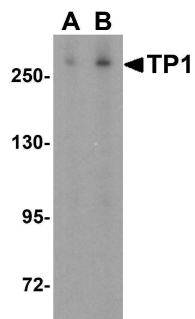
### Technical Details

|                            |   |
|----------------------------|---|
| Immunogen                  | TP1 antibody was raised against a 20 amino acid synthetic peptide from near the amino terminus of human TP1. The immunogen is located within the first 50 amino acids of TP1. |
| Predicted Reactive Species | Mouse   |
| Isotype                    | IgG   |
| Form                       | Liquid  |
| Concentration              | 1 mg/ml   |
| Purification               | TP1 Antibody is affinity chromatography purified via peptide column.  |

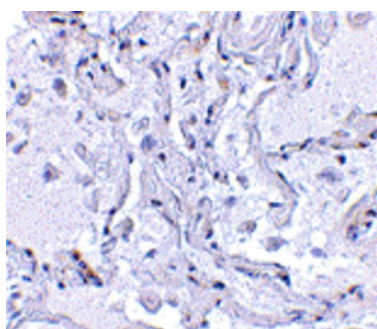
**Suggested Dilutions**

TP1 antibody can be used for detection of TP1 by Western blot at 0.5 - 1 ug/mL. Antibody can also be used for immunohistochemistry starting at 2.5 ug/mL. For immunofluorescence start at 20 ug/mL. Antibody validated: Western Blot in human samples; Immunohistochemistry in human samples and Immunofluorescence in human samples. All other applications and species not yet tested. Optimal dilutions for each application should be determined by the researcher.

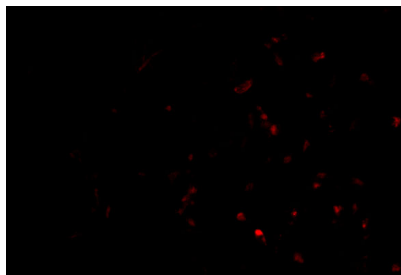
## Anti-TP1 TEP1 Antibody (A02017) Images



Western blot analysis of TP1 in human kidney tissue lysate with TP1 antibody at (A) 0.5 and (B) 1 ug/mL.



Immunohistochemical staining of human lung tissue using TP1 antibody at 2.5 ug/mL.



Immunofluorescence of TP-1 in Human Lung cells with TP-1 antibody at 20 ug/mL.

### Submit a product review to Biocompare.com

Submit a review of this product to Biocompare.com to receive a \$20 Amazon.com giftcard! Your reviews help your fellow scientists make the right decisions. Thank you for your contribution.



Anti-TP1 TEP1 Antibody

For Research Use Only. Not for use in diagnostic procedures.