

Anti-ERAP1 Antibody

Catalog Number: A02021-1

About ERAP1

The endoplasmic reticulum (ER) aminopeptidase 1 (ERAP1), a member of the peptidase M1 family, plays a central role in peptide trimming, a step required for the generation of most HLA class I-binding peptides (1,2). It is also designated as adipocyte-derived leucine aminopeptidase (A-LAP), puromycin-insensitive leucine-specific aminopeptidase (PILS-AP) and aminopeptidase regulator of TNFR1 shedding (ARTS-1) (3). ERAP1 is localized to the lumen of the ER and induced by interferon. It may be involved in the regulation of blood pressure through the inactivation of angiotensin II and/or the generation of bradykinin in the kidney (3,4).

Overview

Product Name	Anti-ERAP1 Antibody
Reactive Species	Human, Mouse
Description	Boster Bio Anti-ERAP1 Antibody (Catalog # A02021-1). Tested in ELISA, WB, IHC-P, IF applications. This antibody reacts with Human, Mouse.
Application	ELISA, IF, IHC-P, WB
Clonality	Polyclonal
Formulation	ERAP1 Antibody is supplied in PBS containing 0.02% sodium azide.
Storage Instructions	ERAP1 antibody can be stored at 4°C for three months and -20°C, stable for up to one year.
Host	Rabbit
Uniprot ID	Q9NZ08

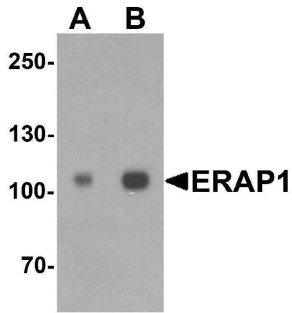
Technical Details

Immunogen	ERAP1 antibody was raised against a 19 amino acid peptide near the carboxy terminus of human ERAP. The immunogen is located within amino acids 730 - 780 of ERAP1 .
Predicted Reactive Species	Rat
Cross Reactivity	ERAP1 antibody is human and mouse reactive. At least two isoforms of ERAP1 are known to exist; this antibody will detect both isoforms. ERAP1 antibody is predicted to not cross-react with ERAP2.
Isotype	IgG
Form	Liquid
Concentration	1 mg/mL
Purification	ERAP1 Antibody is affinity chromatography purified via peptide column.

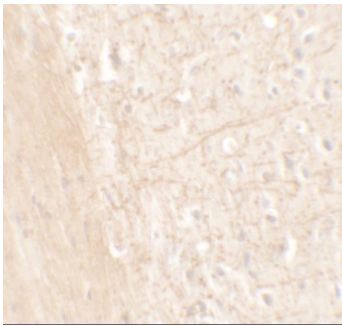
Suggested Dilutions

ERAP1 antibody can be used for detection of ERAP1 by Western blot at 1 - 2 ug/ml.
Antibody validated: Western Blot in human samples; Immunohistochemistry in mouse samples and Immunofluorescence in mouse samples. All other applications and species not yet tested. Optimal dilutions for each application should be determined by the researcher.

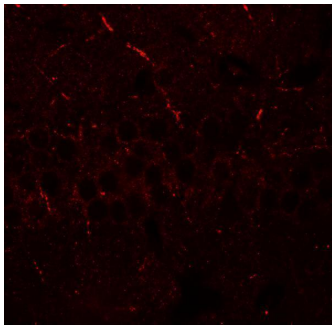
Anti-ERAP1 Antibody (A02021-1) Images



Western blot analysis of ERAP1 in SK-N-SH cell lysate with ERAP1 antibody at (A) 1 and (B) 2 ug/ml.



Immunohistochemistry of ERAP1 in mouse brain tissue with ERAP1 antibody at 5 ug/mL.



Immunofluorescence of ERAP1 in mouse brain tissue with ERAP1 antibody at 20 ug/mL.

Submit a product review to [Biocompare.com](https://www.biocompare.com)

Submit a review of this product to [Biocompare.com](https://www.biocompare.com) to receive a \$20 Amazon.com giftcard! Your reviews help your fellow scientists make the right decisions. Thank you for your contribution.



Anti-ERAP1 Antibody

For Research Use Only. Not for use in diagnostic procedures.