

Anti-SPOP Antibody

Catalog Number: A02032

About SPOP

MEK6 is a member of MAPKK protein kinase family. By using degenerate oligonucleotide primers from the conserved kinase domains of MKK3 and MKK4 two human cDNAs and 1 murine cDNA encoding closely related proteins of the MKK family were cloned. The two human clones appear to be different isoforms of the same gene generated by differential splicing: the shorter clone was designated MKK6, encodes a 278-amino acid protein, while the longer clone, designated MKK6b, encodes a 334-amino acid protein. MKK6 is about 80% identical to MKK3 and 40% identical to MKK4. 1.7-kb human MKK6 transcript is highly expressed in skeletal muscle, while an MKK6b-specific probe detected mRNA bands of 1.8, 2.4, and 4.5 kb that are enriched in heart, skeletal muscle, pancreas and liver. MKK6 plays an important role in intracellular signaling pathways leading toward activation of the p38 MAP kinase. MEK6 phosphorylates and activates p38 in response to inflammatory cytokines or environmental stress. As an essential component of p38 MAPK mediated signal transduction pathway, this gene is involved in many cellular processes such as stress induced cell cycle arrest, transcription activation and apoptosis.

Wang W, et al. (2002) Mol Cell Biol ; 22(10): 3389-403.

Raingeaud J, et al. (1996) Mol Cell Biol; 16(3): 1247-55.

Overview

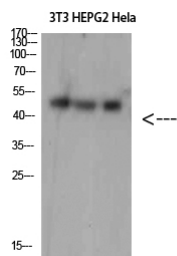
Product Name	Anti-SPOP Antibody
Reactive Species	Human, Mouse, Rat
Description	Boster Bio Anti-SPOP Antibody catalog # A02032. Tested in IHC, WB applications. This antibody reacts with Human, Mouse, Rat.
Application	IHC, WB
Clonality	Polyclonal
Formulation	Liquid in PBS containing 50% glycerol, 0.5% BSA and 0.02% sodium azide.
Storage Instructions	Store at -20°C for one year. For short term storage and frequent use, store at 4°C for up to one month. Avoid repeated freeze-thaw cycles.
Host	Rabbit
Uniprot ID	O43791

Technical Details

Immunogen	Synthesized peptide derived from SPOP at AA range: 41-90.
Predicted Reactive Species	Bovine, Canine, Guinea Pig, Rabbit, Sheep
Isotype	IgG

Form	Liquid
Concentration	This antibody's concentration is >0.5mg/ml.
Purification	Immunogen affinity purified
Suggested Dilutions	<p>Dilute the sample so that the expected range of concentrations fall within the detection range of this kit.</p> <p>If the expected range of concentration is unknown, a pilot test should be conducted to decide the optimal dilution ratio for your samples.</p> <p>Some PubMed article(s) citing the expression level of this target are as follows:</p> <p>Boster Bio's internal QC testing used:</p> <p>WB, 1:500-2000</p>

Anti-SPOP Antibody (A02032) Images



Western Blot (WB) analysis of 3T3 HepG2 HeLa cells using SPOP Polyclonal antibody diluted at 1:1500.



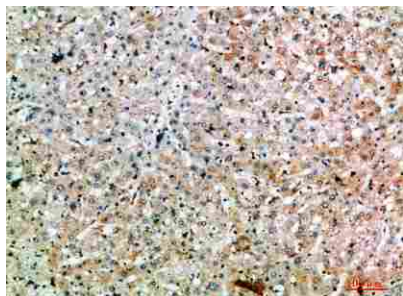
Immunohistochemical analysis of paraffin-embedded human-brain, antibody was diluted at 1:200.



Immunohistochemical analysis of paraffin-embedded human-liver, antibody was diluted at 1:200.



Immunohistochemical analysis of paraffin-embedded human-brain, antibody was diluted at 1:200.



Immunohistochemical analysis of paraffin-embedded human-liver, antibody was diluted at 1:200.

Submit a product review to Biocompare.com

Submit a review of this product to Biocompare.com to receive a \$20 Amazon.com giftcard! Your reviews help your fellow scientists make the right decisions. Thank you for your contribution.



Anti-SPOP Antibody