

Anti-Melan-A/MLANA Antibody Picoband®

Catalog Number: A02033-3

About MLANA

MLANA (Melan-A, also known as MART1; MART-1), located on 9p24.1, is a Protein Coding gene. The gene produces a 13157 Da protein composed of 118 amino acids. MLANA is a hydrophobic transmembrane protein without glycosylation sites highly enriched in early melanosomes. MLANA is expressed in skin and retinal melanocytes and the majority of melanoma tumors, but it is absent from other tissues and tumors. Diseases such as Melanoma In Congenital Melanocytic Nevus and Angiomyolipoma are associated with MLANA. The related pathways of MLANA include NF-kappaB Signaling.

Overview

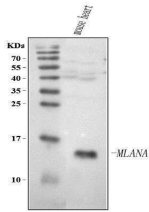
Product Name	Anti-Melan-A/MLANA Antibody Picoband®
Reactive Species	Human, Mouse
Description	Boster Bio Anti-Melan-A/MLANA Antibody Picoband® catalog # A02033-3. Tested in ELISA, WB, Flow Cytometry applications. This antibody reacts with Human, Mouse. The brand Picoband indicates this is a premium antibody that guarantees superior quality, high affinity, and strong signals with minimal background in Western blot applications. Only our best-performing antibodies are designated as Picoband, ensuring unmatched performance.
Application	ELISA, Flow Cytometry, WB
Clonality	Polyclonal
Formulation	Each vial contains 4 mg Trehalose, 0.9 mg NaCl, 0.2 mg Na ₂ HPO ₄ .
Storage Instructions	At -20°C for one year from date of receipt. After reconstitution, at 4°C for one month. It can also be aliquotted and stored frozen at -20°C for six months. Avoid repeated freezing and thawing.
Host	Rabbit
Uniprot ID	Q16655

Technical Details

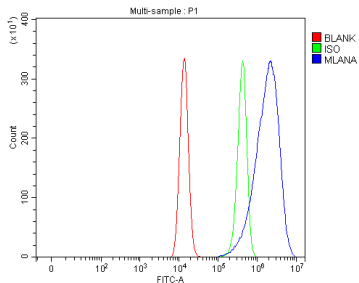
Immunogen	E.coli-derived human Melan-A/MLANA recombinant protein (Position: M1-L37).
Recommended Detection Systems	Boster recommends Enhanced Chemiluminescent Kit with anti-Rabbit IgG (EK1002) for Western blot.
Cross Reactivity	No cross-reactivity with other proteins.
Isotype	Rabbit IgG
Form	Lyophilized
Concentration	Adding 0.2 ml of distilled water will yield a concentration of 500 µg/ml.

Purification	Immunogen affinity purified.
Suggested Dilutions	Western blot, 0.25-0.5 ug/ml, Mouse Flow Cytometry (Fixed), 1-3 ug/1x10 ⁶ cells, Human ELISA, 0.1-0.5 ug/ml, -

Anti-Melan-A/MLANA Antibody Picoband® (A02033-3) Images



Western blot analysis of Melan-A/MLANA using anti-Melan-A/MLANA antibody (A02033-3). Electrophoresis was performed on a 5-20% SDS-PAGE gel at 70V (Stacking gel) / 90V (Resolving gel) for 2-3 hours. The sample well of each lane was loaded with 30 ug of sample under reducing conditions. Lane 1: mouse heart tissue lysates. After electrophoresis, proteins were transferred to a nitrocellulose membrane at 150 mA for 50-90 minutes. Blocked the membrane with 5% non-fat milk/TBS for 1.5 hour at RT. The membrane was incubated with rabbit anti-Melan-A/MLANA antigen affinity purified polyclonal antibody (Catalog # A02033-3) at 0.5 ug/mL overnight at 4°C, then washed with TBS-0.1%Tween 3 times with 5 minutes each and probed with a goat anti-rabbit IgG-HRP secondary antibody at a dilution of 1:5000 for 1.5 hour at RT. The signal is developed using an Enhanced Chemiluminescent detection (ECL) kit (Catalog # EK1002) with Tanon 5200 system. A specific band was detected for Melan-A/MLANA at approximately 13 kDa. The expected band size for Melan-A/MLANA is at 13 kDa.



Flow Cytometry analysis of HEL cells using anti-Melan-A/MLANA antibody (A02033-3). Overlay histogram showing HEL cells stained with A02033-3 (Blue line). To facilitate intracellular staining, cells were fixed with 4% paraformaldehyde and permeabilized with permeabilization buffer. The cells were blocked with 10% normal goat serum. And then incubated with rabbit anti-Melan-A/MLANA Antibody (A02033-3, 1 ug/1x10⁶ cells) for 30 min at 20°C. DyLight®488 conjugated goat anti-rabbit IgG (BA1127, 5-10 ug/1x10⁶ cells) was used as secondary antibody for 30 minutes at 20°C. Isotype control antibody (Green line) was rabbit IgG (1 ug/1x10⁶) used under the same conditions. Unlabelled sample (Red line) was also used as a control.

Submit a product review to [Biocompare.com](https://www.biocompare.com)

Submit a review of this product to [Biocompare.com](https://www.biocompare.com) to receive a \$20 Amazon.com giftcard! Your reviews help your fellow scientists make the right decisions. Thank you for your contribution.



Anti-Melan-A/MLANA Antibody

For Research Use Only. Not for use in diagnostic procedures.