

## Anti-SERPINF1 Antibody (Center)

Catalog Number: A02034-1

### About SERPINF1

SERPINF1 is a member of the serpin family. Serpins are a group of serine protease inhibitors, some of which have also been reported to exhibit neurotrophic activity.

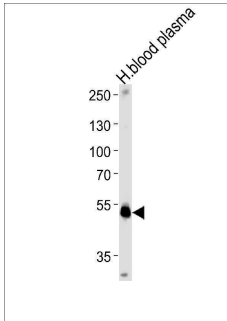
### Overview

Product Name	Anti-SERPINF1 Antibody (Center)
Reactive Species	Human
Description	Boster Bio Anti-SERPINF1 Antibody (Center) (Catalog # A02034-1). Tested in WB, Flow Cytometry, IHC-P application(s). This antibody reacts with Human.
Application	Flow Cytometry, IHC-P, WB
Clonality	Polyclonal
Formulation	Purified polyclonal antibody supplied in PBS with 0.09% (W/V) sodium azide.
Storage Instructions	Maintain refrigerated at 2-8°C for up to 2 weeks. For long-term storage, store at -20°C in small aliquots to prevent freeze-thaw cycles.
Host	Rabbit
Uniprot ID	P36955

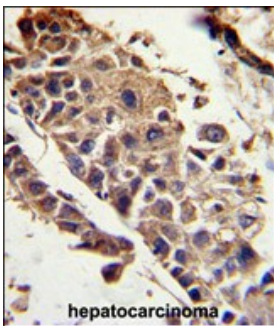
### Technical Details

Immunogen	This SERPINF1 antibody is generated from rabbits immunized with a KLH conjugated synthetic peptide between 279-306 amino acids from the Central region of human SERPINF1.
Predicted Reactive Species	Bovine, Mouse
Isotype	Rabbit IgG
Purification	This antibody is prepared by Saturated Ammonium Sulfate (SAS) precipitation followed by dialysis against PBS.
Suggested Dilutions	WB: 1:1000 IHC-P: 1:50-1:100 FC: 1:10-1:50

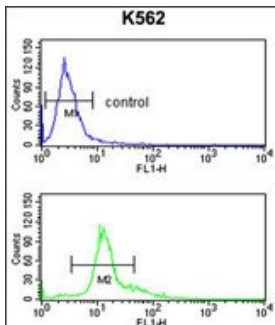
## Anti-SERPINF1 Antibody (Center) (A02034-1) Images



SERPINF1 Antibody (Center) western blot analysis in human blood plasma tissue lysates (35ug/lane). This demonstrates the SERPINF1 antibody detected the SERPINF1 protein (arrow).



Formalin-fixed and paraffin-embedded human hepatocarcinoma reacted with SERPINF1 Antibody (Center), which was peroxidase-conjugated to the secondary antibody, followed by DAB staining. This data demonstrates the use of this antibody for immunohistochemistry; clinical relevance has not been evaluated.



SERPINF1 Antibody (Center) (Cat. #A02034-1) flow cytometry analysis of K562 cells (bottom histogram) compared to a negative control cell (top histogram). FITC-conjugated goat-anti-rabbit secondary antibodies were used for the analysis.

**Submit a product review to Biocompare.com**

Submit a review of this product to Biocompare.com to receive a \$20 Amazon.com giftcard! Your reviews help your fellow scientists make the right decisions. Thank you for your contribution.



Anti-SERPINF1 Antibody (Center)

For Research Use Only. Not for use in diagnostic procedures.