

## Anti-c-Jun (phospho-S243) Antibody

Catalog Number: A02038S243

### Overview

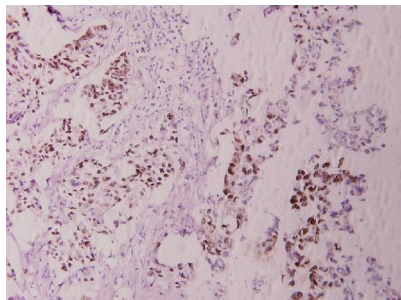
Product Name	Anti-c-Jun (phospho-S243) Antibody
Reactive Species	Human, Mouse, Rat
Description	Boster Bio Anti-c-Jun (phospho-S243) Antibody catalog # A02038S243. Tested in IHC,IP applications. This antibody reacts with Human,Mouse,Rat.
Application	IP, IHC
Clonality	Polyclonal
Formulation	Rabbit IgG, 1mg/ml in PBS with 0.02% sodium azide, 50% glycerol, pH7.2
Storage Instructions	Store at -20°C for one year. For short term storage and frequent use, store at 4°C for up to one month. Avoid repeated freeze-thaw cycles.
Host	Rabbit
Uniprot ID	P05412

### Technical Details

Immunogen	Synthetic phosphopeptide derived from human c-Jun around the phosphorylation site of Serine 243.
Isotype	IgG
Form	Liquid
Concentration	1 mg/ml
Purification	The antibody was affinity-purified from rabbit antiserum by affinity-chromatography using epitope-specific immunogen and the purity is > 95% (by SDS-PAGE).
Suggested Dilutions	IHC: 1:50-1:200 IP: 1:50-1:200

## Anti-c-Jun (phospho-S243) Antibody (A02038S243) Images

---



Immunohistochemistry (IHC) analyzes of p-c-Jun (S243) pAb in paraffin-embedded human breast carcinoma tissue at 1:100.

### Submit a product review to Biocompare.com

---

Submit a review of this product to Biocompare.com to receive a \$20 Amazon.com giftcard! Your reviews help your fellow scientists make the right decisions. Thank you for your contribution.



Anti-c-Jun (phospho-S243) Antibody

For Research Use Only. Not for use in diagnostic procedures.