

## Anti-IFN- beta IFNB1 Antibody

Catalog Number: A02041

### About IFNB1

MEK6 is a member of MAPKK protein kinase family. By using degenerate oligonucleotide primers from the conserved kinase domains of MKK3 and MKK4 two human cDNAs and 1 murine cDNA encoding closely related proteins of the MKK family were cloned. The two human clones appear to be different isoforms of the same gene generated by differential splicing: the shorter clone was designated MKK6, encodes a 278-amino acid protein, while the longer clone, designated MKK6b, encodes a 334-amino acid protein. MKK6 is about 80% identical to MKK3 and 40% identical to MKK4. 1.7-kb human MKK6 transcript is highly expressed in skeletal muscle, while an MKK6b-specific probe detected mRNA bands of 1.8, 2.4, and 4.5 kb that are enriched in heart, skeletal muscle, pancreas and liver. MKK6 plays an important role in intracellular signaling pathways leading toward activation of the p38 MAP kinase. MEK6 phosphorylates and activates p38 in response to inflammatory cytokines or environmental stress. As an essential component of p38 MAPK mediated signal transduction pathway, this gene is involved in many cellular processes such as stress induced cell cycle arrest, transcription activation and apoptosis.

Wang W, et al. (2002) Mol Cell Biol ; 22(10): 3389-403.

Raingeaud J, et al. (1996) Mol Cell Biol; 16(3): 1247-55.

### Overview

Product Name	Anti-IFN- beta IFNB1 Antibody
Reactive Species	Human
Description	Boster Bio Anti-IFN- beta IFNB1 Antibody catalog # A02041. Tested in IHC applications. This antibody reacts with Human.
Application	IHC
Clonality	Polyclonal
Formulation	PBS, pH 7.4, containing 0.02% sodium azide as Preservative and 50% Glycerol.
Storage Instructions	Store at -20°C for one year. For short term storage and frequent use, store at 4°C for up to one month. Avoid repeated freeze-thaw cycles.
Host	Rabbit
Uniprot ID	P01574

### Technical Details

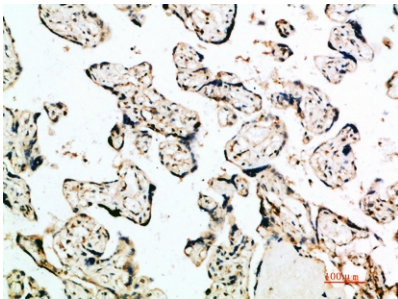
Immunogen	Synthetic peptide from human protein at amino acid range: 91-140
Predicted Reactive Species	Bovine, Canine, Guinea Pig, Rabbit, Sheep
Isotype	IgG

Form	Liquid
Concentration	1 mg/mL
Purification	The antibody was affinity-purified from rabbit anti-serum by affinity-chromatography.
Suggested Dilutions	<p>Dilute the sample so that the expected range of concentrations fall within the detection range of this kit.</p> <p>If the expected range of concentration is unknown, a pilot test should be conducted to decide the optimal dilution ratio for your samples.</p> <p>Some PubMed article(s) citing the expression level of this target are as follows:</p> <p>Boster Bio's internal QC testing used:</p> <p>IHC-P 1:50-200</p>

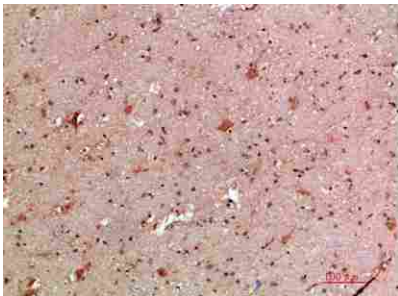
## Anti-IFN- beta IFNB1 Antibody (A02041) Images



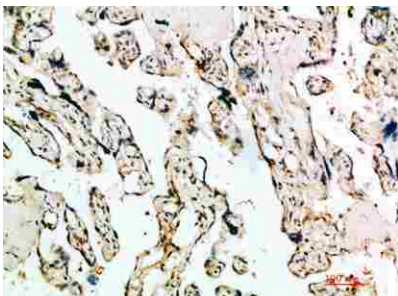
Immunohistochemical analysis of paraffin-embedded human-brain, antibody was diluted at 1:200.



Immunohistochemical analysis of paraffin-embedded human-placenta, antibody was diluted at 1:200.



Immunohistochemical analysis of paraffin-embedded human-brain, antibody was diluted at 1:200.



Immunohistochemical analysis of paraffin-embedded human-placenta, antibody was diluted at 1:200.

## Submit a product review to Biocompare.com

Submit a review of this product to Biocompare.com to receive a \$20 Amazon.com giftcard! Your reviews help your fellow scientists make the right decisions. Thank you for your contribution.



Anti-IFN- beta IFNB1 Antibody