

## Anti-Interferon beta IFNB1 Antibody

Catalog Number: A02041-2

### About IFNB1

Involved in melanosome biogenesis by ensuring the stability of GPR143. Plays a vital role in the expression, stability, trafficking, and processing of melanocyte protein PMEL, which is critical to the formation of stage II melanosomes.

Toshihiko Hoashi, J. Biol. Chem., Apr 2005; 280: 14006 - 14016.

Maria P. Bettinotti, J. Immunol., Jul 1998; 161: 877.

P. J. Frost, J. Immunol., Mar 2001; 166: 3564.

Flora Wang, Clin. Cancer Res., Oct 1999; 5: 2756.

### Overview

Product Name	Anti-Interferon beta IFNB1 Antibody
Reactive Species	Human, Mouse, Rat
Description	Boster Bio Anti-Interferon beta IFNB1 Antibody catalog # A02041-2. Tested in WB applications. This antibody reacts with Human, Mouse, Rat.
Application	WB
Clonality	Polyclonal
Formulation	Rabbit IgG, 1mg/ml in PBS with 0.02% sodium azide, 50% glycerol, pH7.2
Storage Instructions	Store at -20°C for one year. For short term storage and frequent use, store at 4°C for up to one month. Avoid repeated freeze-thaw cycles.
Host	Rabbit
Uniprot ID	P01574

### Technical Details

Immunogen	Synthesized peptide derived from human AP-1 around the phosphorylation site of T231.
Predicted Reactive Species	Boar, Bovine, Canine, Golden Hamster
Isotype	IgG
Form	Liquid
Concentration	1 mg/ml
Purification	The antibody was affinity-purified from rabbit antiserum by affinity-chromatography using epitope-specific immunogen and the purity is > 95% (by SDS-PAGE).

**Suggested Dilutions**

Dilute the sample so that the expected range of concentrations fall within the detection range of this kit.

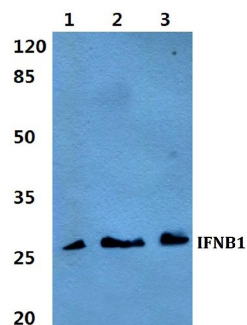
If the expected range of concentration is unknown, a pilot test should be conducted to decide the optimal dilution ratio for your samples.

Some PubMed article(s) citing the expression level of this target are as follows:

Boster Bio's internal QC testing used:

WB: 1:500-1:1000

## Anti-Interferon beta IFNB1 Antibody (A02041-2) Images



Western blot (WB) analysis of IFNB1 polyclonal antibody at 1:500 dilution  
Lane1:MCF-7 cell lysate  
Lane2:Mouse liver tissue lysate  
Lane3:Rat liver tissue lysate

## Submit a product review to Biocompare.com

Submit a review of this product to Biocompare.com to receive a \$20 Amazon.com giftcard! Your reviews help your fellow scientists make the right decisions. Thank you for your contribution.



Anti-Interferon beta IFNB1 Antibody