

## Anti-RuvB-like 1 RUVBL1 Antibody

Catalog Number: A02049

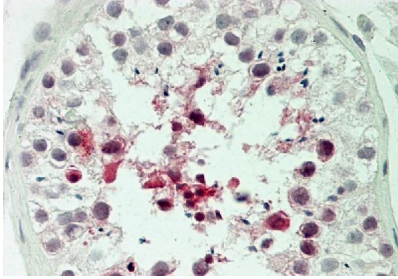
### Overview

Product Name	Anti-RuvB-like 1 RUVBL1 Antibody
Reactive Species	Human
Description	Boster Bio Anti-RuvB-like 1 RUVBL1 Antibody catalog # A02049. Tested in IHC, WB applications. This antibody reacts with Human.
Application	IHC, WB
Clonality	Polyclonal
Formulation	100 µg in 200 µl PBS containing 0.05% BSA and 0.05% sodium azide.
Storage Instructions	Store at -20°C for one year. For short term storage and frequent use, store at 4°C for up to one month. Avoid repeated freeze-thaw cycles.
Host	Rabbit
Uniprot ID	Q9Y265

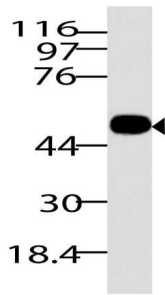
### Technical Details

Immunogen	A partial length recombinant RuvB-like 1 protein (amino acids 1-268).
Form	Liquid
Concentration	0.5-1mg/ml, actual concentration vary by lot. Use suggested dilution ratio to decide dilution procedure.
Suggested Dilutions	<p>Dilute the sample so that the expected range of concentrations fall within the detection range of this kit.</p> <p>If the expected range of concentration is unknown, a pilot test should be conducted to decide the optimal dilution ratio for your samples.</p> <p>Some PubMed article(s) citing the expression level of this target are as follows: Boster Bio's internal QC testing used Western blot analysis:-, 0.5-1 µg/ml Immunohistochemical analysis, 10 µg/ml</p> <p>For protocols, please visit <a href="https://www.bosterbio.com/protocol-and-troubleshooting/">https://www.bosterbio.com/protocol-and-troubleshooting/</a></p>

## Anti-RuvB-like 1 RUVBL1 Antibody (A02049) Images



Immunohistochemical analysis of RuvB-like 1. Anti-RuvB-like 1 antibody in human Testis tissue at 10  $\mu$ m



Western blot analysis of RuvB-like 1. Anti-RuvB-like 1 antibody was used at 1  $\mu$ m

### Submit a product review to Biocompare.com

Submit a review of this product to Biocompare.com to receive a \$20 Amazon.com giftcard! Your reviews help your fellow scientists make the right decisions. Thank you for your contribution.



Anti-RuvB-like 1 RUVBL1 Antibody