

## Anti-Acid ceramidase ASAH1 Antibody

Catalog Number: A02055

### About ASAH1

Sphingolipids are hydrolyzed by ceramidases to yield sphingosine and fatty acids. These ceramidases are classified according to the pH range that supports their optimal activity. ASAH1 is an acid ceramidase and key regulator of ceramide metabolism. Mutations in this gene results in Farber Lipogranulomatosis, a fatal human genetic disorder that results in the painful swelling of the joints and tendons and pulmonary insufficiency, while a complete knockout of its expression is lethal in mice. Recent studies have shown elevated levels of ASAH1 in Alzheimer's disease (AD) patients correlating with a reduction in sphingomyelin and elevation of ceramide. Pretreatment of cultured neurons with recombinant ASAH1 prevented the cells from undergoing A-beta (Ab)-induced apoptosis.

### Overview

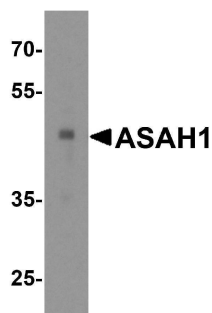
Product Name	Anti-Acid ceramidase ASAH1 Antibody
Reactive Species	Human, Mouse, Rat
Description	Boster Bio Anti-Acid ceramidase ASAH1 Antibody (Catalog # A02055). Tested in ELISA, WB, IHC-P, IF applications. This antibody reacts with Human, Mouse, Rat.
Application	ELISA, IF, IHC-P, WB
Clonality	Polyclonal
Formulation	ASAH1 Antibody is supplied in PBS containing 0.02% sodium azide.
Storage Instructions	ASAH1 antibody can be stored at 4°C for three months and -20°C, stable for up to one year. Avoid repeated freeze-thaw cycles. Antibodies should not be exposed to prolonged high temperatures.
Host	Rabbit
Uniprot ID	Q13510

### Technical Details

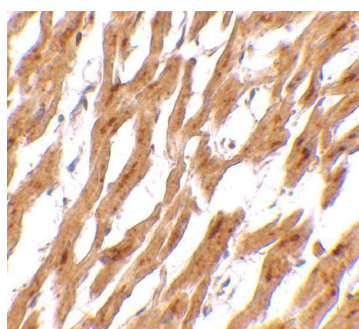
Immunogen	ASAH1 antibody was raised against a 16 amino acid synthetic peptide near the carboxy terminus of the human ASAH1. The immunogen is located within amino acids 240 - 290 of ASAH1.
Predicted Reactive Species	Bovine
Cross Reactivity	Multiple isoforms of ASAH1 are known to exist.
Isotype	IgG
Form	Liquid
Concentration	1 mg/mL

Purification	ASAH1 Antibody is affinity chromatography purified via peptide column.
Suggested Dilutions	ASAH1 antibody can be used for detection of ASAH1 by Western blot at 1 and 2 ug/mL. Antibody can also be used for immunohistochemistry starting at 2.5 ug/mL. For immunofluorescence start at 20 ug/mL. Antibody validated: Western Blot in human samples; Immunohistochemistry in human and rat samples and Immunofluorescence in human and rat samples. All other applications and species not yet tested. Optimal dilutions for each application should be determined by the researcher.

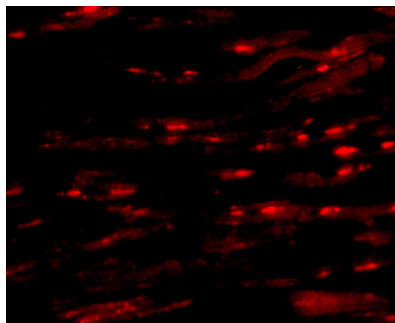
## Anti-Acid ceramidase ASAH1 Antibody (A02055) Images



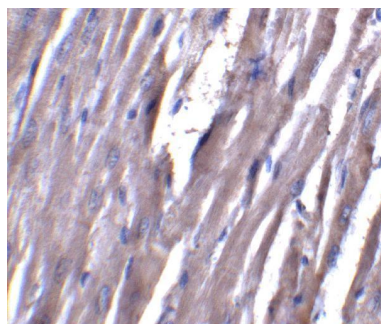
Western blot analysis of ASAH1 in human heart tissue lysate with ASAH1 antibody at 1 ug/mL.



Immunohistochemistry of ASAH1 in human heart tissue with ASAH1 antibody at 2.5 ug/mL.

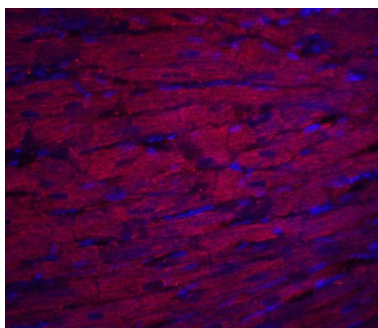


Immunofluorescence of ASAH1 in Human Heart cells with ASAH1 antibody at 20 ug/mL.



Immunohistochemistry of ASAH1 in rat heart tissue with ASAH1 antibody at 5 ug/mL.

Immunofluorescence of ASAH1 in rat heart tissue with ASAH1 antibody at 20 ug/mL. Red: ASAH1 Antibody (A02055)  
Blue: DAPI staining



## Submit a product review to [Biocompare.com](https://www.biocompare.com)

Submit a review of this product to [Biocompare.com](https://www.biocompare.com) to receive a \$20 Amazon.com giftcard! Your reviews help your fellow scientists make the right decisions. Thank you for your contribution.



Anti-Acid ceramidase ASAH1 Antibody

For Research Use Only. Not for use in diagnostic procedures.