

Anti-SLC29A1 Antibody

Catalog Number: A02058

About SLC29A1

SLC29A1 is a member of the equilibrative nucleoside transporter family which plays a key role in nucleoside and nucleobase uptake for salvage pathways of nucleotide synthesis (1,2). SLC29A1 is a transmembrane glycoprotein that localizes to the plasma and mitochondrial membranes and mediates the cellular uptake of nucleosides from the surrounding medium (3). As a nucleoside transporter, SLC29A1 plays an important role in the uptake of nucleoside-based anti-cancer drugs; polymorphisms of point mutations in the gene encoding this protein may affect the efficacy of these drugs (4).

Overview

| | |
|----------------------|--|
| Product Name | Anti-SLC29A1 Antibody |
| Reactive Species | Human |
| Description | Boster Bio Anti-SLC29A1 Antibody (Catalog # A02058). Tested in ELISA, WB, IHC-P, IF applications. This antibody reacts with Human. |
| Application | ELISA, IF, IHC-P, WB |
| Clonality | Polyclonal |
| Formulation | SLC29A1 antibody is supplied in PBS containing 0.02% sodium azide. |
| Storage Instructions | SLC29A1 antibody can be stored at 4°C for three months and -20°C, stable for up to one year. |
| Host | Rabbit |
| Uniprot ID | Q99808 |

Technical Details

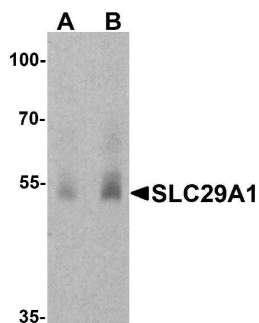
| | |
|----------------------------|---|
| Immunogen | SLC29A1 antibody was raised against a 17 amino acid peptide near the center of human SLC29A1. The immunogen is located within amino acids 240 - 290 of SLC29A1. |
| Predicted Reactive Species | Mouse, Rat |
| Cross Reactivity | SLC29A1 antibody is human specific. SLC29A1 antibody is predicted to not cross-react with other SLC29 proteins. |
| Isotype | IgG |
| Form | Liquid |
| Concentration | 1 mg/mL |
| Purification | SLC29A1 antibody is affinity chromatography purified via peptide column. |

Suggested Dilutions

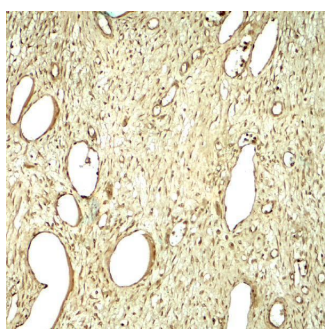
SLC29A1 antibody can be used for detection of SLC29A1 by Western blot at 1 - 2 ug/mL. Antibody can also be used for immunohistochemistry starting at 5 ug/mL. For immunofluorescence start at 20 ug/mL.

Antibody validated: Western Blot in human samples; Immunohistochemistry in human samples and Immunofluorescence in human samples. All other applications and species not yet tested. Optimal dilutions for each application should be determined by the researcher.

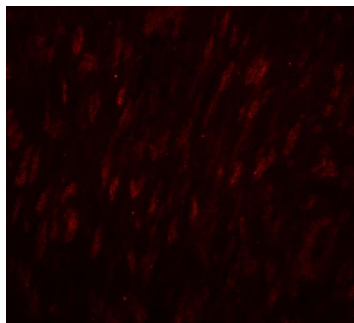
Anti-SLC29A1 Antibody (A02058) Images



Western blot analysis of SLC29A1 in human ovary tissue lysate with SLC29A1 antibody at (A) 1 and (B) 2 ug/ml.



Immunohistochemistry of SLC29A1 in human ovary tissue with SLC29A1 antibody at 5 ug/mL.



Immunofluorescence of SLC29A1 in human ovary tissue with SLC29A1 antibody at 20 ug/mL.

Submit a product review to [Biocompare.com](https://www.biocompare.com)

Submit a review of this product to [Biocompare.com](https://www.biocompare.com) to receive a \$20 Amazon.com giftcard! Your reviews help your fellow scientists make the right decisions. Thank you for your contribution.



Anti-SLC29A1 Antibody

For Research Use Only. Not for use in diagnostic procedures.