

Anti-ENT1/SLC29A1 Antibody

Catalog Number: A02058-2

About SLC29A1

SLC29A1 is a member of the equilibrative nucleoside transporter family which plays a key role in nucleoside and nucleobase uptake for salvage pathways of nucleotide synthesis (1,2). SLC29A1 is a transmembrane glycoprotein that localizes to the plasma and mitochondrial membranes and mediates the cellular uptake of nucleosides from the surrounding medium (3). As a nucleoside transporter, SLC29A1 plays an important role in the uptake of nucleoside-based anti-cancer drugs; polymorphisms of point mutations in the gene encoding this protein may affect the efficacy of these drugs (4).

Overview

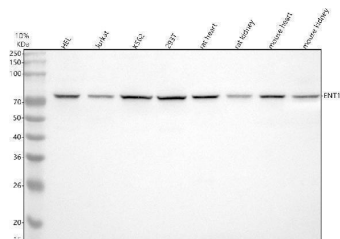
Product Name	Anti-ENT1/SLC29A1 Antibody
Reactive Species	Human, Mouse, Rat
Description	Boster Bio Anti-ENT1/SLC29A1 Antibody catalog # A02058-2. Tested in WB, IHC, IP, ELISA applications. This antibody reacts with Human, Mouse, Rat.
Application	ELISA, IP, IHC, WB
Clonality	Polyclonal
Formulation	500 ug/ml antibody with PBS, 0.02% NaN ₃ , 1 mg stabilizing protein and 50% glycerol This antibody is supplied in a stabilized formulation. Compatibility with conjugation reactions depends on the chemistry of the conjugation method used. For conjugation methods that are not compatible with the stabilizing components present in this formulation, a carrier-free antibody format is required.
Storage Instructions	12 months from date of receipt at -20°C as supplied. 6 months at 2 to 8°C after reconstitution. Avoid repeated freezing and thawing.
Host	Rabbit
Uniprot ID	Q99808

Technical Details

Immunogen	E.coli-derived human ENT1/SLC29A1 recombinant protein (Position: I145-V456).
Form	Liquid
Concentration	500 ug/ml
Purification	Immunogen affinity purified.
Suggested Dilutions	Western blot, 1:500-2000 Immunohistochemistry, 1:50-400 Immunoprecipitation, 1:50

	ELISA, 1:100-1000
--	-------------------

Anti-ENT1/SLC29A1 Antibody (A02058-2) Images



Western blot analysis of ENT1/SLC29A1 using anti-ENT1/SLC29A1 antibody (A02058-2). Electrophoresis was performed on a 10% SDS-PAGE gel at 80V (Stacking gel) / 120V (Resolving gel) for 2 hours. The sample well of each lane was loaded with 30 ug of sample under reducing conditions. Lane 1: human HEL whole cell lysates, Lane 2: human Jurkat whole cell lysates, Lane 3: human K562 whole cell lysates, Lane 4: human 293T whole cell lysates, Lane 5: rat heart tissue lysates, Lane 6: rat kidney tissue lysates, Lane 7: mouse heart tissue lysates, Lane 8: mouse kidney tissue lysates. After electrophoresis, proteins were transferred to a nitrocellulose membrane at 150 mA for 50-90 minutes. Blocked the membrane with 5% non-fat milk/TBS for 1.5 hour at RT. The membrane was incubated with rabbit anti-ENT1/SLC29A1 antigen affinity purified polyclonal antibody (A02058-2) at 1:1000 overnight at 4°C, then washed with TBS-0.1%Tween 3 times with 5 minutes each and probed with a goat anti-rabbit IgG-HRP secondary antibody at a dilution of 1:5000 for 1.5 hour at RT. The signal is developed using an ECL Plus Western Blotting Substrate (Catalog # AR1196-200) with Tanon 5200 system. A specific band was detected for ENT1/SLC29A1 at approximately 75 kDa. The expected band size for ENT1/SLC29A1 is at 50 kDa.

Submit a product review to Biocompare.com

Submit a review of this product to Biocompare.com to receive a \$20 Amazon.com giftcard! Your reviews help your fellow scientists make the right decisions. Thank you for your contribution.



Anti-ENT1/SLC29A1 Antibody

For Research Use Only. Not for use in diagnostic procedures.