

## Anti-EXT2 Antibody (Center)

Catalog Number: A02065-1

### About EXT2

EXT2 encodes one of two glycosyltransferases involved in the chain elongation step of heparan sulfate biosynthesis.

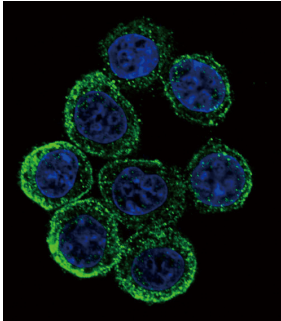
### Overview

Product Name	Anti-EXT2 Antibody (Center)
Reactive Species	Human
Description	Boster Bio Anti-EXT2 Antibody (Center) (Catalog # A02065-1). Tested in WB, Flow Cytometry, IF, IHC-P application(s). This antibody reacts with Human.
Application	Flow Cytometry, IF, IHC-P, WB
Clonality	Polyclonal
Formulation	Purified polyclonal antibody supplied in PBS with 0.09% (W/V) sodium azide.
Storage Instructions	Maintain refrigerated at 2-8°C for up to 2 weeks. For long-term storage, store at -20°C in small aliquots to prevent freeze-thaw cycles.
Host	Rabbit
Uniprot ID	Q93063

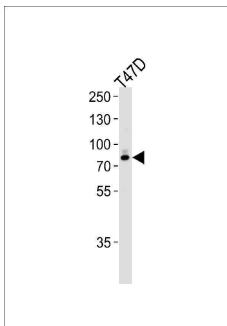
### Technical Details

Immunogen	This EXT2 antibody is generated from rabbits immunized with a KLH conjugated synthetic peptide between 182-209 amino acids from the Central region of human EXT2.
Predicted Reactive Species	Bovine, Mouse
Isotype	Rabbit IgG
Purification	This antibody is purified through a protein A column, followed by peptide affinity purification.
Suggested Dilutions	IF: 1:10-1:50 WB: 1:1000 IHC-P: 1:10-1:50 FC: 1:10-1:50

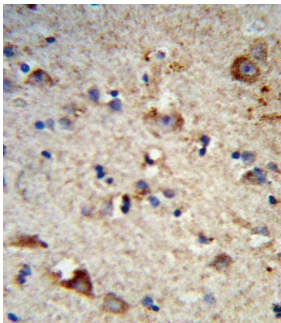
## Anti-EXT2 Antibody (Center) (A02065-1) Images



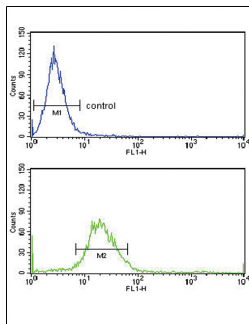
Confocal immunofluorescent analysis of EXT2 Antibody (Center) with hela cell followed by Alexa Fluor 488-conjugated goat anti-rabbit IgG (green). DAPI was used to stain the cell nuclear (blue).



Western blot analysis of lysate from T47D cell line, using EXT2 Antibody (Center). A02065-1 was diluted at 1:1000 at each lane. A goat anti-rabbit IgG H&L(HRP) at 1:5000 dilution was used as the secondary antibody. Lysate at 35ug per lane.



Formalin-fixed and paraffin-embedded human brain tissue reacted with EXT2 Antibody (Center), which was peroxidase-conjugated to the secondary antibody, followed by DAB staining. This data demonstrates the use of this antibody for immunohistochemistry; clinical relevance has not been evaluated.



EXT2 Antibody (Center) flow cytometry analysis of HeLa cells (bottom histogram) compared to a negative control cell (top histogram). FITC-conjugated goat-anti-rabbit secondary antibodies were used for the analysis.

**Submit a product review to Biocompare.com**

Submit a review of this product to Biocompare.com to receive a \$20 Amazon.com giftcard! Your reviews help your fellow scientists make the right decisions. Thank you for your contribution.



Anti-EXT2 Antibody (Center)

For Research Use Only. Not for use in diagnostic procedures.