

Anti-JAM A pY280 F11R Antibody

Catalog Number: A02068

About F11R

Anti-JAM A pY280 was designed, produced, and validated as part of the Joy Cappel Young Investigator Award (JCYIA). JAM A pY280 Antibody detects junctional adhesion molecule A (JAM A) protein phosphorylated at the tyrosine 280 location. JAM A is involved in cell-cell contact and tight junction formation in epithelial cells. JAM A protein is a transmembrane protein expressed in epithelial and endothelial cells as well as in hematopoietic cells and is important for a variety of cellular processes including tight junction assembly, leukocyte transmigration, platelet activation, angiogenesis and virus binding. In addition, JAM A may be a potential therapeutic target for breast cancer.

Overview

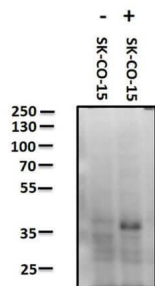
Product Name	Anti-JAM A pY280 F11R Antibody
Reactive Species	Human
Description	Boster Bio Anti-JAM A pY280 F11R Antibody (Catalog # A02068). Tested in ELISA, IF, WB applications. This antibody reacts with Human.
Conjugate	HRP
Application	ELISA, IF, WB
Clonality	Polyclonal
Formulation	0.02 M Potassium Phosphate, 0.15 M Sodium Chloride, pH 7.2, 0.01% (w/v) Sodium Azide
Storage Instructions	Store vial at -20°C prior to opening. ?Aliquot contents and freeze at -20°C or below for extended storage. ?Avoid cycles of freezing and thawing. ?Centrifuge product if not completely clear after standing at room temperature. ?This product is stable for several weeks at 4°C as an undiluted liquid. ?Dilute only prior to immediate use. Expiration date is one (1) year from date of opening. (Ship on dry ice.)
Host	Rabbit
Uniprot ID	50848

Technical Details

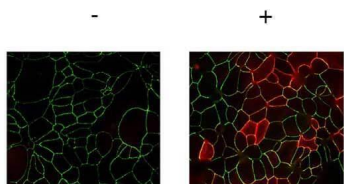
Immunogen	Affinity purified Anti-JAM A pY280 antibody was prepared from whole rabbit serum produced by repeated immunizations with a synthetic peptide corresponding to the c-term and phosphorylated at the tyrosine 280 position of Human JAM A protein.
Predicted Reactive Species	Bovine, Pufferfish, Zebrafish
Isotype	IgG
Form	Liquid (sterile filtered)

Concentration	1.02mg/mL by UV absorbance at 280 nm
Purification	Anti-JAM A pY280 is directed against human JAM A phosphorylated at the tyrosine 280 position. This product is an affinity purified antibody produced by immunoaffinity chromatography using phospho peptide coupled to agarose beads followed by solid phase adsorption(s) against non-phospho peptide to remove any unwanted reactivities. A BLAST analysis was used to suggest reactivity with this protein from human and feline based on 100% homology for the immunogen sequence.
Suggested Dilutions	ELISA: 5 ug/ml IF Microscopy: User optimized WB: 1 ug/ml This affinity purified antibody has been tested for use in ELISA, IF, and western blot. Specific conditions for reactivity should be optimized by the end user. Expect a band ~ 32.5 kDa in size corresponding to JAM A by western blotting in the appropriate cell lysate or extract.

Anti-JAM A pY280 F11R Antibody (A02068) Images



Western Blot of Rabbit anti-JAM A pY280 antibody. Lane 1: SK-CO-15 negative control. Lane 2: SK-CO-15 pervanadate treated positive control. Load: 10 μ g per lane. Primary antibody: JAM A pY280 antibody at 1 μ g/mL for overnight at 4°C. Secondary antibody: Peroxidase rabbit secondary antibody at 1:40,000 for 30 min at RT. Block: 30 minutes at RT. Predicted/Observed size: ~ 32.5 kDa. JCYIA



Immunofluorescence Microscopy of Rabbit anti-JAMA pY280 antibody. Tissue: T84 cells (untreated/treated). Fixation: 0.5% PFA. Antigen retrieval: not required. Primary antibody: JAMA pY280 antibody at 2 μ g/mL for 1 hr at RT. Secondary antibody: Fluorescein rabbit secondary antibody at 1:10,000 for 45 min at RT. Localization: JAMA pY280 is along the cell membrane and cell junction. Staining: JAMA pY280 as red fluorescent signal. JCYIA

Submit a product review to Biocompare.com

Submit a review of this product to Biocompare.com to receive a \$20 Amazon.com giftcard! Your reviews help your fellow scientists make the right decisions. Thank you for your contribution.



Anti-JAM A pY280 F11R Antibody

For Research Use Only. Not for use in diagnostic procedures.