

Anti-CD42b/GP1BA Antibody

Catalog Number: A02073-4

About GP1BA

CD42b is a platelet activation marker involved in the process of coagulation as an aggregating factor. It interacts with extracellular matrix as well as with adhesion molecules. Its expression and activation seems to be regulated by VEGF and PDGF.

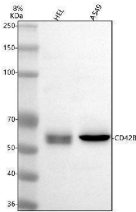
Overview

| | |
|----------------------|--|
| Product Name | Anti-CD42b/GP1BA Antibody |
| Reactive Species | Human, Mouse |
| Description | Boster Bio Anti-CD42b/GP1BA Antibody catalog # A02073-4. Tested in WB, IHC, ELISA applications. This antibody reacts with Human, Mouse. |
| Application | ELISA, IHC, WB |
| Clonality | Polyclonal |
| Formulation | 500 ug/ml antibody with PBS, 0.02% NaN ₃ , 1 mg stabilizing protein and 50% glycerol *This antibody is supplied in a stabilized formulation. Compatibility with conjugation reactions depends on the chemistry of the conjugation method used. For conjugation methods that are not compatible with the stabilizing components present in this formulation, a carrier-free antibody format is required. |
| Storage Instructions | 12 months from date of receipt at -20°C as supplied. 6 months at 2 to 8°C after reconstitution. Avoid repeated freezing and thawing. |
| Host | Rabbit |
| Uniprot ID | P07359 |

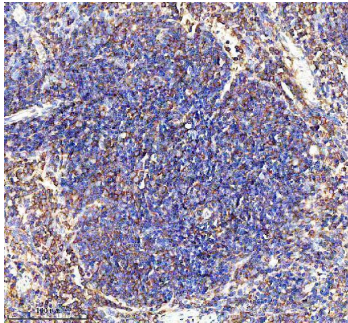
Technical Details

| | |
|---------------------|---|
| Immunogen | E.coli-derived human GP1BA recombinant protein (Position: V22-K350). |
| Form | Liquid |
| Concentration | 500 ug/ml |
| Purification | Immunogen affinity purified. |
| Suggested Dilutions | Western blot, 1:500-2000 Immunohistochemistry, 1:50-400 ELISA, 1:100-1000 |

Anti-CD42b/GP1BA Antibody (A02073-4) Images



Western blot analysis of CD42b/GP1BA using anti-CD42b/GP1BA antibody (A02073-4). Electrophoresis was performed on a 10% SDS-PAGE gel at 80V (Stacking gel) / 120V (Resolving gel) for 2 hours. The sample well of each lane was loaded with 30 ug of sample under reducing conditions. Lane 1: human HEL whole cell lysates, Lane 2: human A549 whole cell lysates. After electrophoresis, proteins were transferred to a nitrocellulose membrane at 150 mA for 50-90 minutes. Blocked the membrane with 5% non-fat milk/TBS for 1.5 hour at RT. The membrane was incubated with rabbit anti-CD42b/GP1BA antigen affinity purified polyclonal antibody (A02073-4) at 1:1000 overnight at 4°C, then washed with TBS-0.1%Tween 3 times with 5 minutes each and probed with a goat anti-rabbit IgG-HRP secondary antibody at a dilution of 1:5000 for 1.5 hour at RT. The signal is developed using an ECL Plus Western Blotting Substrate (Catalog # AR1196-200) with Tanon 5200 system. A specific band was detected for CD42b/GP1BA at approximately 58 kDa. The expected band size for CD42b/GP1BA is at 72 kDa.



IHC analysis of CD42b/GP1BA using anti-CD42b/GP1BA antibody (A02073-4). CD42b/GP1BA was detected in a paraffin-embedded section of mouse spleen tissue. Heat mediated antigen retrieval was performed in EDTA buffer (pH 8.0, epitope retrieval solution). The tissue section was blocked with 10% goat serum. The tissue section was then incubated with 1:100 rabbit anti-CD42b/GP1BA Antibody (A02073-4) overnight at 4°C. Peroxidase Conjugated Goat Anti-rabbit IgG was used as secondary antibody and incubated for 30 minutes at 37°C. The tissue section was developed using HRP Conjugated Rabbit IgG Super Vision Assay Kit (Catalog # SV0002) with DAB as the chromogen.

Submit a product review to Biocompare.com

Submit a review of this product to Biocompare.com to receive a \$20 Amazon.com giftcard! Your reviews help your fellow scientists make the right decisions. Thank you for your contribution.



Anti-CD42b/GP1BA Antibody

For Research Use Only. Not for use in diagnostic procedures.