

## Anti-CTIP RBBP8 Antibody

Catalog Number: A02076

### Overview

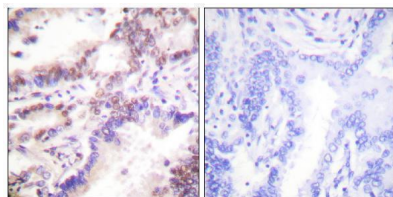
|                      |  |
|----------------------|--|
| Product Name         | Anti-CTIP RBBP8 Antibody   |
| Reactive Species     | Human, Mouse   |
| Description          | Boster Bio Anti-CTIP RBBP8 Antibody (Catalog# A02076). Tested in IHC, ICC, IF, WB, ELISA applications. This antibody reacts with Human, Mouse.   |
| Application          | ELISA, IF, IHC, ICC, WB  |
| Clonality            | Polyclonal   |
| Formulation          | PBS containing 50% glycerol, 0.5% stabilizing protein and 0.02% sodium azide.<br>*This antibody is supplied in a stabilized formulation.<br>Compatibility with conjugation reactions depends on the chemistry of the conjugation method used. For conjugation methods that are not compatible with the stabilizing components present in this formulation, a carrier-free antibody format is required. |
| Storage Instructions | Store at -20°C for one year. For short-term storage and frequent use, store at 4°C for up to one month. Avoid repeated freeze-thaw cycles.   |
| Host                 | Rabbit   |
| Uniprot ID           | Q99708   |

### Technical Details

|                     |  |
|---------------------|--|
| Immunogen           | A peptide derived from human CTIP. Immunogen sequence location: 293-342                                  |
| Cross Reactivity    | No cross reactivity with other proteins.   |
| Isotype             | Rabbit IgG   |
| Form                | Liquid   |
| Concentration       | 0.5-1mg/ml, actual concentration vary by lot. Use suggested dilution ratio to decide dilution procedure. |
| Purification        | The antibody was purified from rabbit antiserum by affinity-chromatography using immunogen.              |
| Suggested Dilutions | WB 1:500-2000<br>IHC 1:100 - 1:300.<br>ELISA: 1:40000.<br>ICC/IF 1:50-200                                |

## Anti-CTIP RBBP8 Antibody (A02076) Images

---



Immunohistochemistry analysis of paraffin-embedded human lung carcinoma tissue, using CTIP Antibody. The picture on the right is blocked with the synthesized peptide.

## Submit a product review to Biocompare.com

---

Submit a review of this product to Biocompare.com to receive a \$20 Amazon.com giftcard! Your reviews help your fellow scientists make the right decisions. Thank you for your contribution.



Anti-CTIP RBBP8 Antibody

For Research Use Only. Not for use in diagnostic procedures.