

Anti-Protein aurora borealis Bora Antibody

Catalog Number: A02087

About BORA

Bora (Protein aurora borealis) is a key activator of Aurora Related Protein Kinase A (ARK-1), which is a centrosome-associated serine/threonine kinase that regulates centrosome maturation, bipolar spindle assembly and chromosome segregation during mitosis. Bora is localized to the nucleus until mitosis is initiated, then translocates to the cytoplasm in a Cdc2 dependent manner. Activation of Cdc2 initiates the release of Bora into the cytoplasm where it can bind and activate ARK-1. PLK1 (polo-like kinase-1) interacts with Bora to control the accessibility of its activation loop for phosphorylation and activation by ARK-1. Bora and ARK-1 cooperatively activate PLK1 and control mitotic entry. Bora mutants result in multipolar spindles in mitosis identical to those observed when ARK-1 function is blocked. Thus, the ARK1-Bora-PLK1 regulatory circuit in mammalian cells elucidates a key mechanism in cell cycle regulation. At least three isoforms of Bora are known to exist.

Overview

Product Name	Anti-Protein aurora borealis Bora Antibody
Reactive Species	Human, Mouse, Rat
Description	Boster Bio Anti-Protein aurora borealis Bora Antibody (Catalog # A02087). Tested in ELISA, WB, IHC-P, IF applications. This antibody reacts with Human, Mouse, Rat.
Application	ELISA, IF, IHC-P, WB
Clonality	Polyclonal
Formulation	Bora Antibody is supplied in PBS containing 0.02% sodium azide.
Storage Instructions	Bora antibody can be stored at 4°C for three months and -20°C, stable for up to one year. Avoid repeated freeze-thaw cycles. Antibodies should not be exposed to prolonged high temperatures.
Host	Rabbit
Uniprot ID	Q6PGQ7

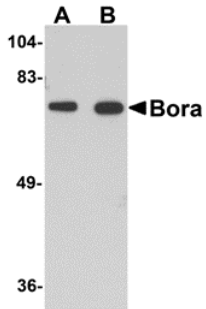
Technical Details

Immunogen	Bora antibody was raised against a 15 amino acid synthetic peptide from near the carboxy terminus of human Bora. The immunogen is located within amino acids 410 - 460 of Bora.
Predicted Reactive Species	Bovine, Mouse, Rat
Isotype	IgG
Form	Liquid
Concentration	1 mg/mL
Purification	Bora Antibody is affinity chromatography purified via peptide column.

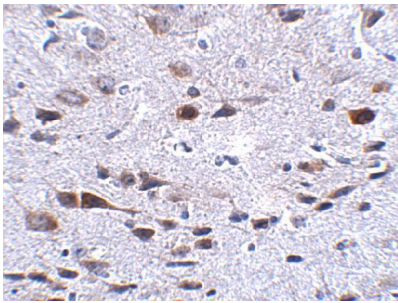
Suggested Dilutions

Bora antibody can be used for detection of Bora by Western blot at 1-2 ug/mL. Antibody can also be used for immunohistochemistry starting at 2.5 ug/mL. For immunofluorescence start at 20 ug/mL. Antibody validated: Western Blot in mouse samples; Immunohistochemistry in mouse samples and Immunofluorescence in mouse samples. All other applications and species not yet tested. Optimal dilutions for each application should be determined by the researcher.

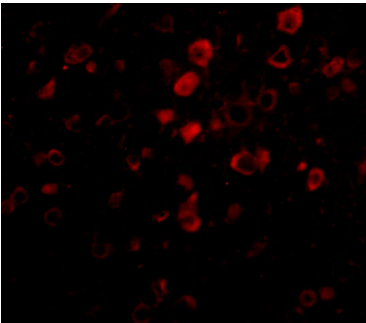
Anti-Protein aurora borealis Bora Antibody (A02087) Images



Western blot analysis of Bora in mouse brain tissue lysate with Bora antibody at (A) 1 and (B) 2 ug/mL.



Immunohistochemistry of Bora in mouse brain tissue with Bora antibody at 2.5 ug/mL.



Immunofluorescence of Bora in Mouse Brain cells with Bora antibody at 20 ug/mL.

Submit a product review to [Biocompare.com](https://www.biocompare.com)

Submit a review of this product to [Biocompare.com](https://www.biocompare.com) to receive a \$20 Amazon.com giftcard! Your reviews help your fellow scientists make the right decisions. Thank you for your contribution.



Anti-Protein aurora borealis Bora Antibody

For Research Use Only. Not for use in diagnostic procedures.