

Anti-Sprouty-2 SPRY2 Antibody

Catalog Number: A02089-1

About SPRY2

Sprouty was originally identified as an inhibitor of Drosophila epidermal growth factor (EGF) and fibroblast growth factor (FGF) receptor signaling during tracheal development. Four isoforms of mammalian sprouty are known (Spry1-Spry4). The role of the mammalian analogs has not been clearly elucidated although it is believed that human Sprouty-2 (hSpry2) may be an inhibitor of cellular migration and proliferation. Spry2 and Spry4 show considerable sequence homology between human and mouse at the C-terminus of the protein. Significant sequence divergence occurs at the N-terminus. Spry2 appears to be abundant in brain, lung and heart tissue, with lesser amounts found in kidney and skeletal muscle.

Overview

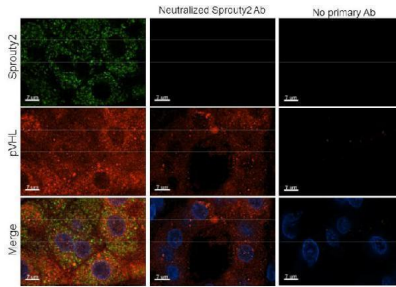
Product Name	Anti-Sprouty-2 SPRY2 Antibody
Reactive Species	Human
Description	Boster Bio Anti-Sprouty-2 SPRY2 Antibody (Catalog # A02089-1). Tested in ELISA, IF, IHC applications. This antibody reacts with Human.
Conjugate	HRP
Application	ELISA, IF, IHC, WB
Clonality	Polyclonal
Formulation	0.02 M Potassium Phosphate, 0.15 M Sodium Chloride, pH 7.2, 0.01% (w/v) Sodium Azide
Storage Instructions	Store vial at -20°C prior to opening. Aliquot contents and freeze at -20°C or below for extended storage. Avoid cycles of freezing and thawing. Centrifuge product if not completely clear after standing at room temperature. This product is stable for several weeks at 4°C as an undiluted liquid. Dilute only prior to immediate use. Expiration date is one (1) year from date of opening. (Ship on dry ice.)
Host	Rabbit
Uniprot ID	O43597

Technical Details

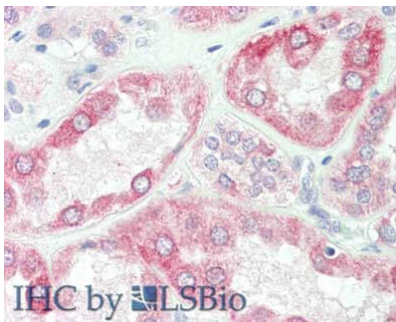
Immunogen	Anti-Sprouty-2 affinity purified antibody was purified from monospecific rabbit antiserum prepared via repeated immunizations with peptide corresponding to an internal region of human sprouty-2.
Predicted Reactive Species	Bovine, Pufferfish, Zebrafish
Isotype	IgG
Form	Liquid (sterile filtered)
Concentration	1.04 mg/mL by UV absorbance at 280 nm

Purification	Anti-Sprouty-2 was affinity purified from monospecific antiserum by immunoaffinity chromatography. Sprouty-2 antibody reacts with human Sprouty 2 protein. A BLAST analysis was used to suggest reactivity with Sprouty 2 from human, monkey, and orangutan based on a 100% homology with the immunizing sequence. Cross-reactivity with Sprouty2 from other sources has not been determined.
Suggested Dilutions	ELISA: User optimized IHC: 10 µg/mL IF Microscopy: User optimized WB: 1:500-1:5,000 Anti-Sprouty-2 antibody has been tested by ELISA, Immunofluorescence, Immunohistochemistry, and is suitable for western blotting. Specific conditions for reactivity should be optimized by the end user.

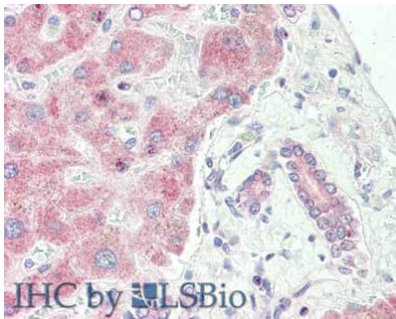
Anti-Sprouty-2 SPRY2 Antibody (A02089-1) Images



Immunohistochemistry of Rabbit anti-Sprouty2 antibody. Tissue: human kidney clear cell tumor. Fixation: formalin fixed, paraffin embedded. Antigen retrieval: yes. Primary antibody: Sprouty2 antibody at 1:250. Secondary antibody: alexafluor 488 secondary at 1:500 overnight at 4°C. Localization: nucleus and cytoplasm. Staining: green = sprouty2, Blue = dapi, red= vhl.



Immunohistochemistry of rabbit anti-Sprouty-2 antibody. Tissue: kidney. Fixation: formalin fixed paraffin embedded. Antigen retrieval: not required. Primary antibody: Anti-sprouty 2 at 10 µg/mL for 1 h at RT. Secondary antibody: Peroxidase rabbit secondary antibody at 1:10,000 for 45 min at RT. Staining: Sprouty-2 as precipitated red signal with hematoxylin purple nuclear counterstain.



Immunohistochemistry of rabbit anti-Sprouty-2 antibody. Tissue: liver. Fixation: formalin fixed paraffin embedded. Antigen retrieval: not required. Primary antibody: Anti-sprouty 2 at 10 µg/mL for 1 h at RT. Secondary antibody: Peroxidase rabbit secondary antibody at 1:10,000 for 45 min at RT. Staining: Sprouty-2 as precipitated red signal with hematoxylin purple nuclear counterstain.

Submit a product review to Biocompare.com

Submit a review of this product to Biocompare.com to receive a \$20 Amazon.com giftcard! Your reviews help your fellow scientists make the right decisions. Thank you for your contribution.



Anti-Sprouty-2 SPRY2 Antibody

For Research Use Only. Not for use in diagnostic procedures.