

Anti-CRKL Antibody Picoband®

Catalog Number: A02100-1

About CRKL

Crk-like protein is a protein that in humans is encoded by the CRKL gene. This gene encodes a protein kinase containing SH2 and SH3 (src homology) domains which has been shown to activate the RAS and JUN kinase signaling pathways and transform fibroblasts in a RAS-dependent fashion. It is a substrate of the BCR-ABL tyrosine kinase, plays a role in fibroblast transformation by BCR-ABL, and may be oncogenic.

Overview

Product Name	Anti-CRKL Antibody Picoband®
Reactive Species	Human
Description	Boster Bio Anti-CRKL Antibody Picoband® catalog # A02100-1. Tested in ELISA, Flow Cytometry, IP, IF, ICC, WB applications. This antibody reacts with Human. The brand Picoband indicates this is a premium antibody that guarantees superior quality, high affinity, and strong signals with minimal background in Western blot applications. Only our best-performing antibodies are designated as Picoband, ensuring unmatched performance.
Application	ELISA, Flow Cytometry, IP, IF, ICC, WB
Clonality	Polyclonal
Formulation	Each vial contains 4 mg Trehalose, 0.9 mg NaCl, 0.2 mg Na ₂ HPO ₄ .
Storage Instructions	At -20°C for one year from date of receipt. After reconstitution, at 4°C for one month. It can also be aliquotted and stored frozen at -20°C for six months. Avoid repeated freezing and thawing.
Host	Rabbit
Uniprot ID	P46109

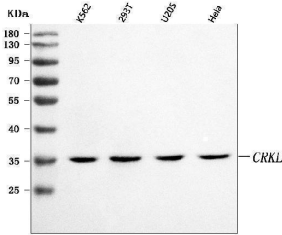
Technical Details

Immunogen	E.coli-derived human CRKL recombinant protein (Position: M1-H290).
Recommended Detection Systems	Boster recommends Enhanced Chemiluminescent Kit with anti-Rabbit IgG (EK1002) for Western blot, and HRP Conjugated anti-Rabbit IgG Super Vision Assay Kit (SV0002-1) for ICC.
Cross Reactivity	No cross-reactivity with other proteins
Isotype	Rabbit IgG
Form	Lyophilized
Concentration	Adding 0.2 ml of distilled water will yield a concentration of 500 µg/ml.
Purification	Immunogen affinity purified.

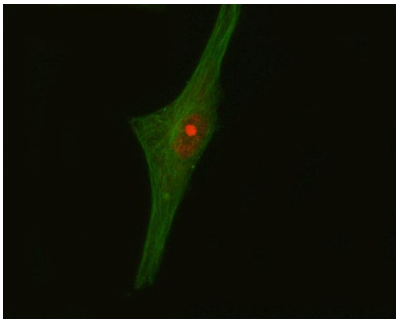
Suggested Dilutions

Western blot, 0.25-0.5 ug/ml, Human
Immunocytochemistry/Immunofluorescence, 5 ug/ml, Human
Immunoprecipitation, 0.5-2 ug/ml, Human
Flow Cytometry (Fixed), 1-3 ug/1x10⁶ cells, Human
ELISA, 0.1-0.5 ug/ml, -

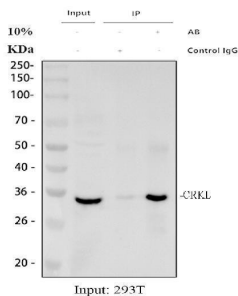
Anti-CRKL Antibody Picoband® (A02100-1) Images



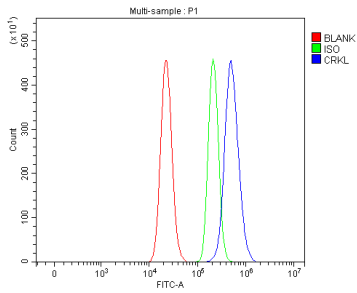
Western blot analysis of CRKL using anti-CRKL antibody (A02100-1). Electrophoresis was performed on a 5-20% SDS-PAGE gel at 70V (Stacking gel) / 90V (Resolving gel) for 2-3 hours. The sample well of each lane was loaded with 30 ug of sample under reducing conditions. Lane 1: human K562 whole cell lysates, Lane 2: human 293T whole cell lysates, Lane 3: human U2OS whole cell lysates, Lane 4: human HeLa whole cell lysates. After electrophoresis, proteins were transferred to a nitrocellulose membrane at 150 mA for 50-90 minutes. Blocked the membrane with 5% non-fat milk/TBS for 1.5 hour at RT. The membrane was incubated with rabbit anti-CRKL antigen affinity purified polyclonal antibody (Catalog # A02100-1) at 0.5 ug/mL overnight at 4°C, then washed with TBS-0.1%Tween 3 times with 5 minutes each and probed with a goat anti-rabbit IgG-HRP secondary antibody at a dilution of 1:5000 for 1.5 hour at RT. The signal is developed using an Enhanced Chemiluminescent detection (ECL) kit (Catalog # EK1002) with Tanon 5200 system. A specific band was detected for CRKL at approximately 34 kDa. The expected band size for CRKL is at 34 kDa.



IF analysis of CRKL using anti-CRKL antibody (A02100-1) and anti-Tubulin Alpha antibody (M03989-3). CRKL was detected in immunocytochemical section of U87 cell. Enzyme antigen retrieval was performed using IHC enzyme antigen retrieval reagent (AR0022) for 15 mins. The cells were blocked with 10% goat serum. And then incubated with 5 ug/mL rabbit anti-CRKL Antibody (A02100-1) and mouse anti-Tubulin Alpha antibody (M03989-3) overnight at 4°C. Cy3 Conjugated Goat Anti-Rabbit IgG (BA1032) and DyLight®488 Conjugated Goat Anti-Mouse IgG (BA1126) were used as secondary antibody at 1:500 dilution and incubated for 30 minutes at 37°C. Visualize using a fluorescence microscope and filter sets appropriate for the label used.



Immunoprecipitating (IP) CRKL in 293T whole cell lysate. Western blot analysis of CRKL using anti-CRKL antibody (A02100-1); Lane 1: 293T whole cell lysates (30ug); Lane 2: Rabbit control IgG instead of anti-CRKL antibody in 293T whole cell lysate; Lane 3: anti-CRKL antibody (2ug) + 293T whole cell lysate (500ug). After electrophoresis, proteins were transferred to a membrane. Then the membrane was incubated with rabbit anti-CRKL antigen affinity purified polyclonal antibody (A02100-1) at a dilution of 0.5 ug/mL and probed with a mouse anti-rabbit IgG-HRP secondary antibody (Catalog # BM2007). The signal is developed using ECL Plus Western Blotting Substrate (Catalog # AR1196-200). A specific band was detected for CRKL at approximately 34 kDa. The expected band size for CRKL is at 34 kDa.



Flow Cytometry analysis of RT4 cells using anti-CRKL antibody (A02100-1). Overlay histogram showing RT4 cells stained with A02100-1 (Blue line). To facilitate intracellular staining, cells were fixed with 4% paraformaldehyde and permeabilized with permeabilization buffer. The cells were blocked with 10% normal goat serum. And then incubated with rabbit anti-CRKL Antibody (A02100-1, 1 ug/1x10⁶ cells) for 30 min at 20°C. DyLight® 488 conjugated goat anti-rabbit IgG (BA1127, 5-10 ug/1x10⁶ cells) was used as secondary antibody for 30 minutes at 20°C. Isotype control antibody (Green line) was rabbit IgG (1 ug/1x10⁶) used under the same conditions. Unlabelled sample without incubation with primary antibody and secondary antibody (Red line) was used as a blank control.

Submit a product review to Biocompare.com

Submit a review of this product to Biocompare.com to receive a \$20 Amazon.com giftcard! Your reviews help your fellow scientists make the right decisions. Thank you for your contribution.



Anti-CRKL Antibody

For Research Use Only. Not for use in diagnostic procedures.