

Anti-KCNB1 (phospho-S805) Antibody

Catalog Number: A02108S805

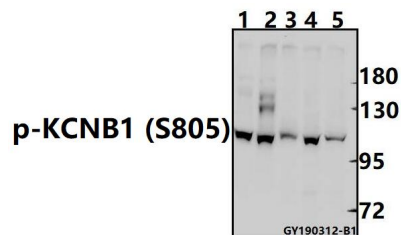
Overview

Product Name	Anti-KCNB1 (phospho-S805) Antibody
Reactive Species	Human, Mouse, Rat
Description	Boster Bio Anti-KCNB1 (phospho-S805) Antibody catalog # A02108S805. Tested in WB applications. This antibody reacts with Human,Rat,Mouse.
Application	WB
Clonality	Polyclonal
Formulation	Rabbit IgG, 1mg/ml in PBS with 0.02% sodium azide, 50% glycerol, pH7.2
Storage Instructions	Store at -20°C for one year. For short term storage and frequent use, store at 4°C for up to one month. Avoid repeated freeze-thaw cycles.
Host	Rabbit
Uniprot ID	Q14721

Technical Details

Immunogen	Synthetic phosphopeptide derived from human KCNB1 around the phosphorylation site of Serine805.
Isotype	IgG
Form	Liquid
Concentration	1 mg/ml
Purification	The antibody was affinity-purified from rabbit antiserum by affinity-chromatography using epitope-specific immunogen and the purity is > 95% (by SDS-PAGE).
Suggested Dilutions	WB: 1:500-1:1000

Anti-KCNB1 (phospho-S805) Antibody (A02108S805) Images



Western blot (WB) analysis of KCNB1 (phospho-S805) polyclonal antibody at 1:500 dilution Lane1:CT26 whole cell lysate(40ug) Lane2:C6 whole cell lysate(40ug) Lane3:Panc1 whole cell lysate(40ug) Lane4:A549 whole cell lysate(40ug) Lane5:U-87MG whole cell lysate(40ug)

Submit a product review to Biocompare.com

Submit a review of this product to Biocompare.com to receive a \$20 Amazon.com giftcard! Your reviews help your fellow scientists make the right decisions. Thank you for your contribution.



Anti-KCNB1 (phospho-S805) Antibody

For Research Use Only. Not for use in diagnostic procedures.