

Anti-p130 Rb2 RBL2 Antibody

Catalog Number: A02118

About RBL2

Retinoblastoma-like protein 2 (Rb2) is a key regulator of entry into cell division. It is directly involved in heterochromatin formation by maintaining overall chromatin structure and, in particular, that of constitutive heterochromatin by stabilizing histone methylation. p130 recruits and targets histone methyltransferases KMT5B and KMT5C, leading to epigenetic transcriptional repression. It controls histone H4 'Lys-20' trimethylation and probably acts as a transcription repressor by recruiting chromatin-modifying enzymes to promoters. It is a potent inhibitor of E2F-mediated transactivation, associates preferentially with E2F5. It binds to cyclins A and E as well as binds to and may be involved in the transforming capacity of the adenovirus E1A protein. Rb2 may act as a tumor suppressor.

Overview

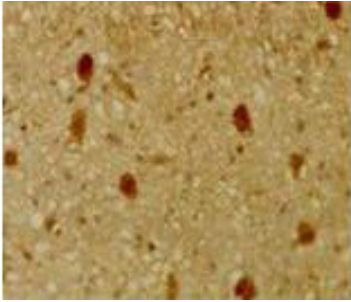
Product Name	Anti-p130 Rb2 RBL2 Antibody
Reactive Species	Mouse
Description	Boster Bio Anti-p130 Rb2 RBL2 Antibody (Catalog # A02118). Tested in IHC, WB applications. This antibody reacts with Mouse.
Application	ELISA, IP, IHC, WB
Clonality	Polyclonal
Formulation	0.02 M Potassium Phosphate, 0.15 M Sodium Chloride, pH 7.2, 0.01% (w/v) Sodium Azide
Storage Instructions	Store vial at -20°C prior to opening. Aliquot contents and freeze at -20°C or below for extended storage. Avoid cycles of freezing and thawing. Centrifuge product if not completely clear after standing at room temperature. This product is stable for several weeks at 4°C as an undiluted liquid. Dilute only prior to immediate use. Expiration date is one (1) year from date of opening. (Ship on dry ice.)
Host	Rabbit
Uniprot ID	Q08999

Technical Details

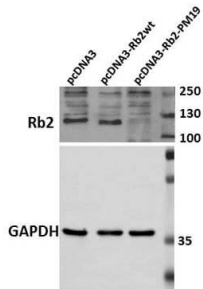
Immunogen	Rb2 (p130) peptide corresponding to a region near the C-terminus of the human protein conjugated to Keyhole Limpet Hemocyanin (KLH).
Predicted Reactive Species	Bovine, Canine, Equine, Pig, Rabbit
Cross Reactivity	No cross reactivity with other proteins.
Isotype	Antiserum
Form	Liquid (sterile filtered)

Concentration	85 mg/mL by Refractometry
Purification	This product was prepared from monospecific antiserum by delipidation and defibrination. Antiserum will specifically react with a 130 kDa Rb2 protein from human, rat and mouse tissue. No reaction was observed against other related tumor suppressor proteins. Cross-reactivity with Rb2 (p130) from other species may also occur.
Suggested Dilutions	ELISA: 1:5,000 - 1:20,000 IHC: 1:200 - 1:1,000 IP: 1:100 WB: 1:500 - 1:2,000 Anti-p130 has been tested by western blot and immunohistochemistry and is suitable for ELISA, immunoprecipitation, immunoblotting, immunohistochemistry, and other immunological methods requiring high titer and specificity.

Anti-p130 Rb2 RBL2 Antibody (A02118) Images



Immunohistochemical staining of mouse tissue using anti-pRb2/p130 antiserum. The staining shows the location of pRb2/p130 in developing mouse tissue. Other detection systems should yield similar results. Sections were cut at 5-7 μm , mounted on glass and dried overnight at 37°C. All sections were deparaffinized in xylene, rehydrated through a graded alcohol series and washed in phosphate-buffered saline (PBS). PBS was used for all subsequent washes and for antiserum dilution. Tissue sections were quenched sequentially in 0.5% hydrogen peroxide and blocked with diluted 10% normal goat anti-rabbit serum. Slides were incubated at 20° C for 1 h with rabbit anti-pRb2/p130 (1:500) dilution, washed, and then reacted with diluted goat anti-rabbit biotinylated antibody for 30 min. Slides were then reacted with streptavidin-peroxidase conjugate for 30 min at 20° C. Diaminobenzidine was used as the final chromogen. Negative controls for each tissue section were prepared by substituting the primary antiserum with pre-immune serum.



Western Blot of Rabbit Anti-Rb2 p130 Antibody. Lane 1: HEK 293 pcDNA3. Lane 2: HEK 293 pcDNA3-Rb2wt. Lane 3: HEK 293 pcDNA3-Rb2-PM19. Load: 30 μg per lane. Primary antibody: Anti-Rb2 antibody at 1:250 for overnight at 4°C. Secondary antibody: IRDye800™ rabbit secondary antibody at 1:10,000 for 45 min at RT. Block: 5% BLOTTO overnight at 4°C. Predicted/Observed size: 130 kDa for p130/Rb2.

Submit a product review to Biocompare.com

Submit a review of this product to Biocompare.com to receive a \$20 Amazon.com giftcard! Your reviews help your fellow scientists make the right decisions. Thank you for your contribution.



Anti-p130 Rb2 RBL2 Antibody

For Research Use Only. Not for use in diagnostic procedures.