

Anti-TREM-1 Antibody

Catalog Number: A02135

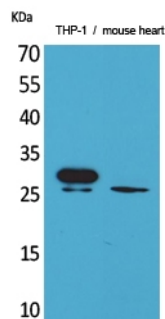
Overview

Product Name	Anti-TREM-1 Antibody
Reactive Species	Human
Description	Boster Bio Anti-TREM-1 Antibody catalog # A02135. Tested in IHC, WB applications. This antibody reacts with Human.
Application	IHC, WB
Clonality	Polyclonal
Formulation	Liquid in PBS containing 50% glycerol, 0.5% BSA and 0.02% sodium azide.
Storage Instructions	Store at -20°C for one year. For short term storage and frequent use, store at 4°C for up to one month. Avoid repeated freeze-thaw cycles.
Host	Rabbit
Uniprot ID	Q9NP99

Technical Details

Immunogen	Synthesized peptide derived from the Internal region of human TREM-1. at AA range: 40-120
Predicted Reactive Species	Bovine, Canine, Equine, Pig, Rabbit
Isotype	IgG
Form	Liquid
Concentration	This antibody's concentration is >0.5mg/ml.
Purification	Immunogen affinity purified
Suggested Dilutions	<p>Dilute the sample so that the expected range of concentrations fall within the detection range of this kit.</p> <p>If the expected range of concentration is unknown, a pilot test should be conducted to decide the optimal dilution ratio for your samples.</p> <p>Some PubMed article(s) citing the expression level of this target are as follows:</p> <p>Boster Bio's internal QC testing used:</p> <p>WB, 1:500-1:2000</p> <p>IHC-P, 1:100-300</p>

Anti-TREM-1 Antibody (A02135) Images



Western Blot (WB) analysis of THP-1, Mouse Heart cells using TREM-1 Polyclonal antibody.



Immunohistochemistry (IHC) analysis of paraffin-embedded Human Brain, antibody was diluted at 1:100.

Submit a product review to Biocompare.com

Submit a review of this product to Biocompare.com to receive a \$20 Amazon.com giftcard! Your reviews help your fellow scientists make the right decisions. Thank you for your contribution.



Anti-TREM-1 Antibody