

Anti-Dipeptidyl peptidase 1 CTSC Antibody

Catalog Number: A02136-1

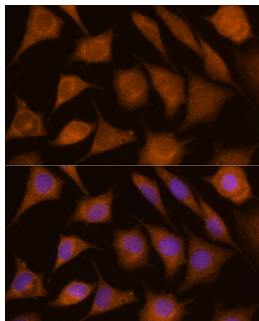
Overview

Product Name	Anti-Dipeptidyl peptidase 1 CTSC Antibody
Reactive Species	Mouse
Description	Boster Bio Anti-Dipeptidyl peptidase 1 CTSC Antibody catalog # A02136-1. Tested in ICC/IF applications. This antibody reacts with Mouse.
Application	IF, ICC
Clonality	Polyclonal
Formulation	Rabbit IgG, 1mg/ml in PBS with 0.02% sodium azide, 50% glycerol, pH7.2
Storage Instructions	Store at -20°C for one year. For short term storage and frequent use, store at 4°C for up to one month. Avoid repeated freeze-thaw cycles.
Host	Rabbit
Uniprot ID	P53634

Technical Details

Immunogen	Recombinant fusion protein of human CTSC(NP_001805.3).
Isotype	IgG
Form	Liquid
Concentration	1 mg/ml
Purification	The antibody was affinity-purified from rabbit antiserum by affinity-chromatography using epitope-specific immunogen and the purity is > 95% (by SDS-PAGE).
Suggested Dilutions	ICC/IF: 1:50-1:200

Anti-Dipeptidyl peptidase 1 CTSC Antibody (A02136-1) Images



Immunofluorescence analysis of L929 using CTSC antibody at dilution of 1:100 . Blue: DAPI for nuclear staining.

Submit a product review to Biocompare.com

Submit a review of this product to Biocompare.com to receive a \$20 Amazon.com giftcard! Your reviews help your fellow scientists make the right decisions. Thank you for your contribution.



Anti-Dipeptidyl peptidase 1 CTSC Antibody

For Research Use Only. Not for use in diagnostic procedures.